


LL-AD-DX-LCLC-mmOM3/AQUA

— Adapter LC-LC, duplex, multimode in aqua color according to OM3 specifications —

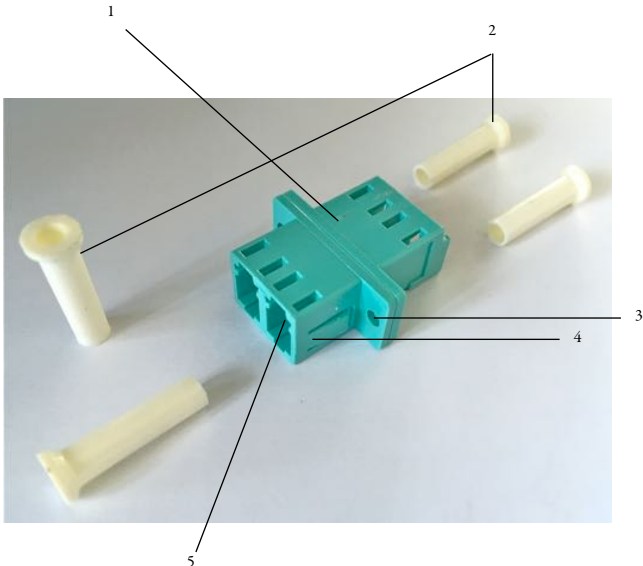
Adapter: plastic body in aqua color, zirconia-ceramic (ZrO₂) sleeves

Standards: Adapters are designed and tested to conform the requirements of IEC, CECC, EIA/TIA & Telcordia (Bellcore)

APPLICATION

LC-LC-adapters are considered to be one of the most common SFF (*Small-Form-Factor*) inter-connection devices in fiber optic networking. The most efficient duplex-version allows, for example, 24 connections within the given space of a 1U front plate of a patch panel. – The LC-to-LC duplex-adapter for multimode applications features a plastic compound body with push-pull devices, including two zirconia/ceramic sleeves. - The product is manufactured in accordance to environmental standards EN187000 and IEC60794-1-2 .

LC-LC/DUPLEX ADAPTER SET



CONSTRUCTION

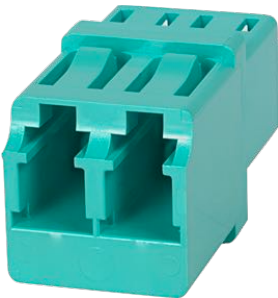
1 - ADAPTER BODY

2 - DUST COVERS

3 - FIXATION SCREWING DEVICES

4 - FIXATION SNAP-ON CLAMPS

5 - SLEEVES



CHARACTERISTICS

Type	: LC - LC
Version	: duplex, incl. dust covers
Application	: multimode
Material of sleeves	: zirconia-ceramic (ZrO ₂)
Material of body	: plastic compound, aqua color
Fixation at panel	: snap-on clamps and screwing devices M2 x 6
Connection to inserting connectors	: push-pull
Typical attenuation	: ≤ 0.20dB (<i>dep. on accuracy of inserting connectors</i>)
Mating cycles	: 1000 / typical increase after 1000 cycles ≤ 0.20dB
Temperature range	: -40°C to 85°C

