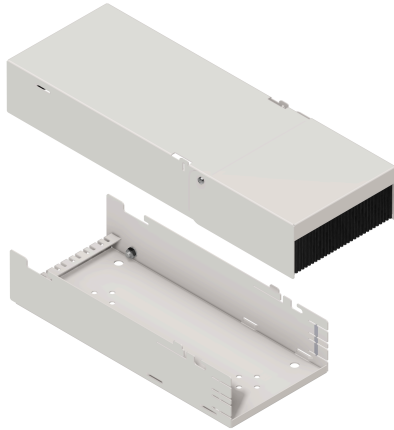


# DClink consolidation point housing, long

## 1 Ru, 7 HP, white

Illustration similar



### Description

DClink consolidation point housing, long. Cover with latching mechanism, flap with hinge-joint for covering the connectors on the patch side. Front and rear side with brush strip.

### Properties / applications

For mounting in false floor, inserted ceiling or on wall. For 2x 3.5 HP or 1x 7 HP modules. Toolless installation of modules. Mixing of FO and CU modules possible.

### Construction

Material (housing) Steel sheet, powder coated  
 Colour White

### Dimensions

Width 115 mm  
 Height 52 mm  
 Depth 320 mm

### Standards, certificates and approvals

Cabling standard ISO/IEC 11801, EN 50173  
 Chemical continuance Conform to RoHS and REACH

### Scope of supply

Packing unit: 1 piece

### Part number

LKD9S0000230000