

Cable Modem Termination System (CMTS)

A Cable Modem Termination System (CMTS) allows the professional feeding of IP services into small cable networks and is also suitable for the hospitality sector. Via downstream and upstream channels DOCSIS2.0 or DOCSIS3.0 modems are supplied.

Benefits at a glance:

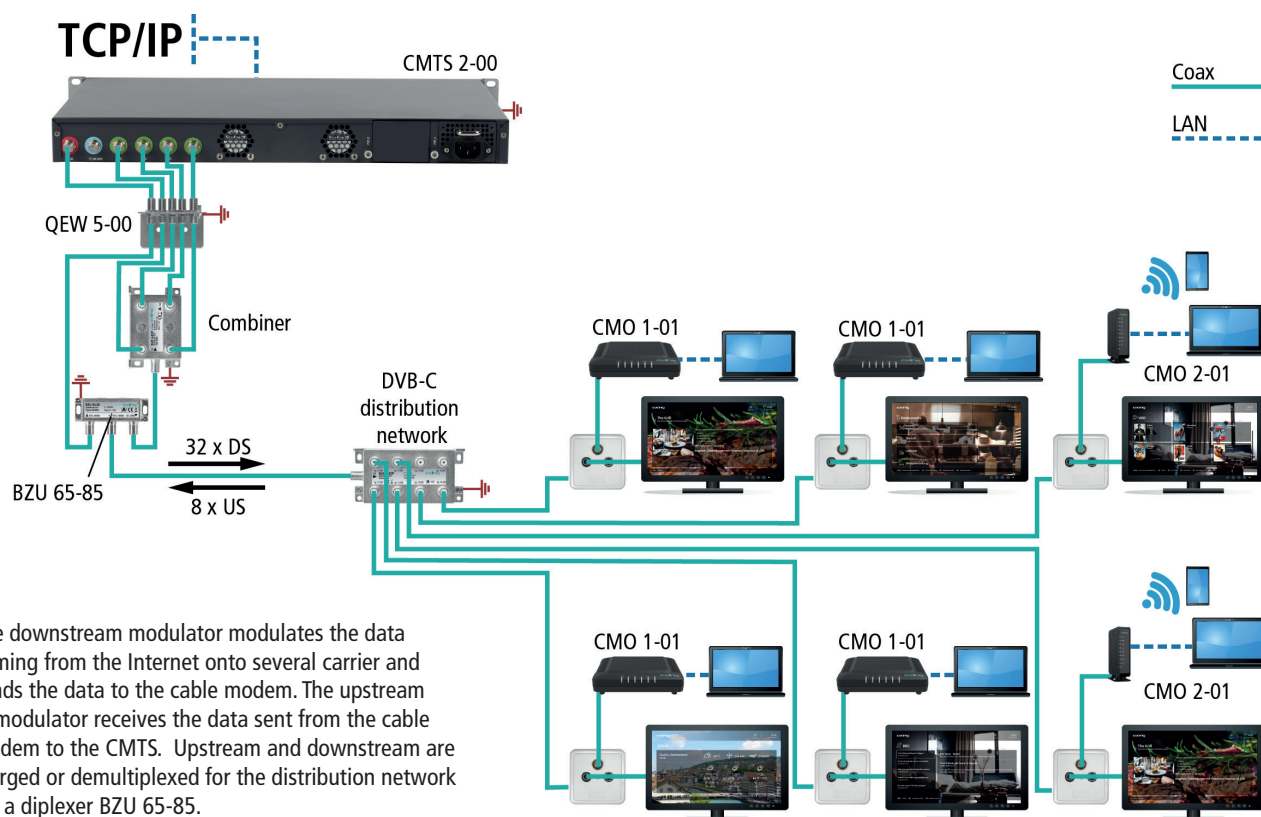
- ✓ Feeding in internet services in small cable systems
- ✓ According to DOCSIS and EuroDOCSIS 3.0 / 2.0*
- ✓ Web-based configuration
- ✓ Supports SNMPv1, v2c, v3
- ✓ 19" housing, 1RU

*Suitable cable modems on request

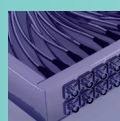


Available devices:

- | | |
|-----------|--|
| CMTS 2-00 | Cable Modem Termination System
32 downstream channels
8 upstream channels
1600 Mbps in the downstream
240 Mbps in the upstream |
| CZU 2-00 | Additional power supply unit CMTS 2-00
For use as redundant power supply |
| BZU 65-85 | Diplexer 65/85 MHz
Splitting or merging of
upstream and downstream |



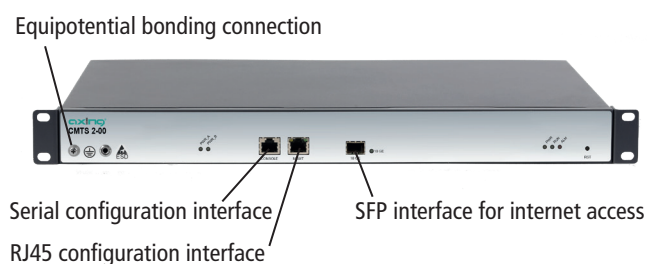
The downstream modulator modulates the data coming from the Internet onto several carrier and sends the data to the cable modem. The upstream demodulator receives the data sent from the cable modem to the CMTS. Upstream and downstream are merged or demultiplexed for the distribution network via a diplexer BZU 65-85.



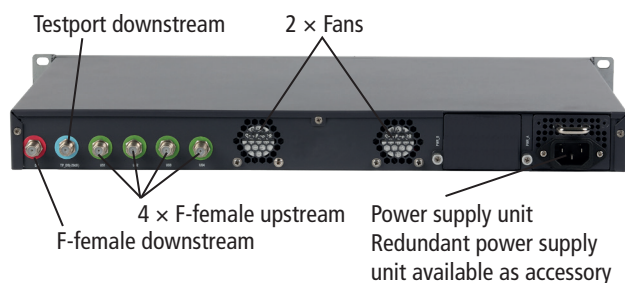
AXING AG
Gewerbehaus Moskau
Phone +41 52 - 742 83 00
Fax +41 52 - 742 83 19

8262 Ramsen
info@axing.com
www.axing.com

Front



Rear



Type	CMTS 2-00
Max. number of modems in the network	1000
Downstream	
Number of channels	32
Data rate	1600 Mbps
Frequency range	87...1002 MHz
Channel bandwidth	6 MHz / 8 MHz
Modulation	QAM64, QAM256
Output level	40 dBmV = 100 dBμV @ 32 chs 43 dBmV = 103 dBμV @ 16 chs 46 dBmV = 106 dBμV @ 8 chs 49 dBmV = 109 dBμV @ 4 chs 52 dBmV = 112 dBμV @ 2 chs 55 dBmV = 115 dBμV @ 1 ch
MER	≥39 dB @ Equalizer off ≥43 dB @ Equalizer on
Upstream	
Number of channels	8
Data rate	240 Mbps
Frequency range	5...65 MHz
Channel bandwidth	1.6 MHz / 3.2 MHz/ 6.4 MHz
Output level	-7...+23 dBmV @ 6.4 MHz -10...+20 dBmV @ 3.2MHz -13...+17 dBmV @ 1.6MHz
Demodulation	QPSK, QAM16, QAM32, QAM64
Connectors	
Connector type	F-female
Return loss	≥12 dB
Interfaces	
Internet	1 x 10GE SFP+
Configuration interface	1 x RJ45, IEEE 802.3ah, 1000 Base-T 1 x Serial, 115200 bps
General	
Operation voltage	90...264 VAC 47...63Hz
Power consumption	70 W
Operating temperature range	0...+40°C
Operating humidity (non-condensing)	10...90%
Dimensions (W x H x D) appr.	483 mm x 44 mm x 300 mm
Weight	4.80 kg

