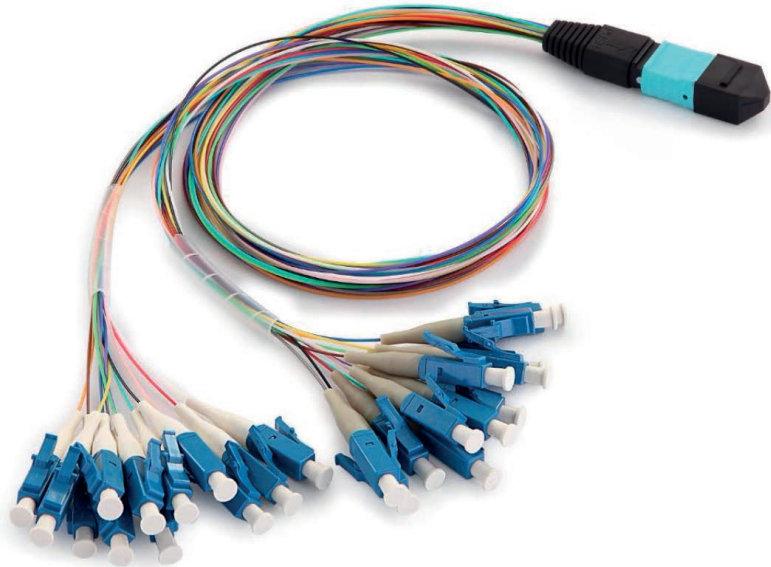


ENSURE

MTP/MPO Hydra Cable



MPO/MTP Hydra cable assemblies is deployed inside plug and play cassette modules. It is used for multi- fiber to single-fiber splitting out interconnects. This solution is a 12-colored 0.9mm cable utilizing a MPO/MTP connector on one end and generic connectors (such as LC, SC, FC, etc.) on the other end. They are available for purchase as a bundle with plug and play modules, MPO/MTP Adapter Plates, and other solutions. It is fully configurable, available in 8/12/16/24 fibers versions as well as Multi-mode (Standard 50/125, 62.5/125, BI 10Gig 50/125) and Single-mode fiber types.

APPLICATIONS

- Data Center Interconnect
- Backbone Installations
- Telecommunication Networks
- Broadband/CATV Networks
- LAN/WAN Premises

FEATURES

- Low loss performance
- Fiber count available in 8-24
- Available in OS1, OS2, G.657A2, OM3, OM4 Fiber Grades
 - OM1 and OM2 available upon request
- Option for LSZH, PVC or Hytrel loose tube • 100% factory terminated and tested

STANDARDS COMPLIANCE

- TIA/EIA-568.3-D and ISO/IEC 11801
- IEC-61754 & EIA/TIA-604-5
- NFPA 262 or IEC 60332
- Compliant to Directive 2002/95/EC (RoHS) and REACH SvHC
- EN 50575
- Comply with GR-1435-CORE, GR-2866-CORE, GR-326-CORE

MTP/MPO Hydra Cable

GENERAL SPECIFICATION

Construction		Description						
Fiber Count		8~24 Fibers						
Fiber Mode		Single mode:OS2/G657 (9/125um) Multimode:OM4 (50/125um), OM3 (50/125um)						
Fiber Brand		SMF-28® Ultra optical fiber Corning ClearCurve® multimode fiber						
Cable Jacket Ratings		PVC, LSZH, Hytrel						
Cable Jacket Color		Blue,Orange,Green,Brown,Grey,White,Red,Black,Yellow,Purple,Pink,Aqua						
Polarity		A/B/C or Customized						
MPO/ MTP	Ferrule	12F, 16F, 24F						
	Ferrule Brand	US Conec, HANKUSAN, Nissin						
	Connector Type	Female, Male						
	Connector Brand	US Conec MTP, Senko MPO, Nissin MPO, Sanwa MPO, FURUKAWA MPO						
	Connector Color	Ferrule	SM(APC)	SM(PC)	OM3	OM4	or customized	
		Low loss	Yellow	Yellow	Aqua	Magenta		
		Standard	Green	Blue	Aqua	Magenta		
Boot Color		Green/Black/ or Customized						
Single-fiber connector		LC, SC, FC, etc.						
Operating Temperature		-20°C to +70°C						
Storage Temperature		-40°C to +85°C						

TECHNICAL SPECIFICATION

MPO / MTP Termination

Optical Properties	Single mode		Multimode	
Insertion Loss (dB)	Low loss	Standard	Low loss	Standard
	≤0.35(Typical:≤0.25)	≤0.75(Typical:≤0.4)	≤0.35(Typical:≤0.2)	≤0.5(Typical:≤0.35)
Return Loss (dB)	PC≥50; APC≥60		PC≥20	
Wavelength (nm)	1310/1550		850/1300	
Durability	≤0.3 (dB)typical change, 50 matings			

MTP/MPO Hydra Cable

Generic Connector Termination

Optical Properties	Single mode	Multimode
Insertion Loss (dB)	≤ 0.2	≤ 0.2
Return Loss (dB)	PC ≥ 55 ; APC ≥ 60	PC ≥ 25
Wavelength (nm)	1310/1550	850/1300
Durability	≤ 0.2 (dB)typical change, 500 matings	