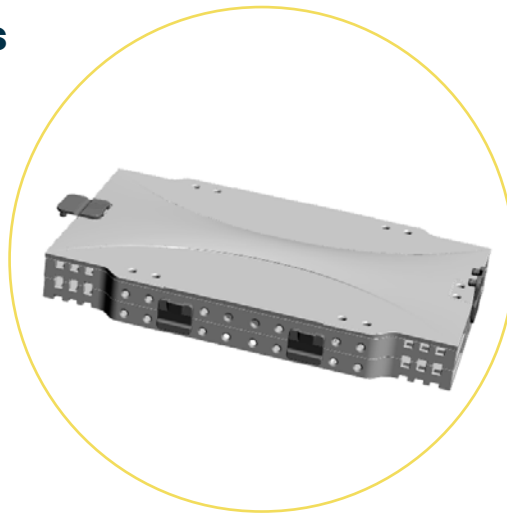


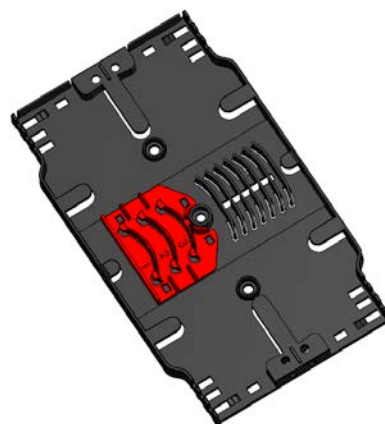
Fiberoptic Splice Trays



- Made of ABS material with high resistance;
- Splice tray in white color or other colors (requested by the customer) for maximum capacity of 24 splices;
- Splice tray in black color or other colors ((requested by the customer) for maximum capacity of 3 PLC Optical Splitters and 12 splices for Input splitter fiber;
- Stackable trays with special hinges for easy opening;
- Top cover and side hinges;
- Compatible with R&M tray system



White Splice Tray for 24 splices



Splitter Tray with dedicated support for 3
Splitters size 40*4*4 or 70*50*4

Description	Splice Tray for 24 splices white color RAL9010
Part Number	1000020000018
Description	Cover for Splice Tray white color RAL9010 (include 2 hinges)
Part Number	1010020000013
Description	Cover for Splice Tray white color RAL9010 (10 units pack)
Part Number	1010020000072
Description	Cover for Splice Tray black color RAL9005 (include 2 hinges)
Part Number	1010020000014
Description	Cover for Splice Tray black color RAL9005 (10 units pack)
Part Number	1010020000073
Description	Additional Splice Tray for 24 splices white color RAL9010 (include 4 hinges)
Part Number	1010020000042
Description	Additional Splice Tray for 24 splices white color RAL9010 (5 units pack)
Part Number	1010020000071
Description	Additional Splice Tray for 3 splitters + 12 splices black color RAL9005 (include 4 hinges)
Part Number	1010020000043

