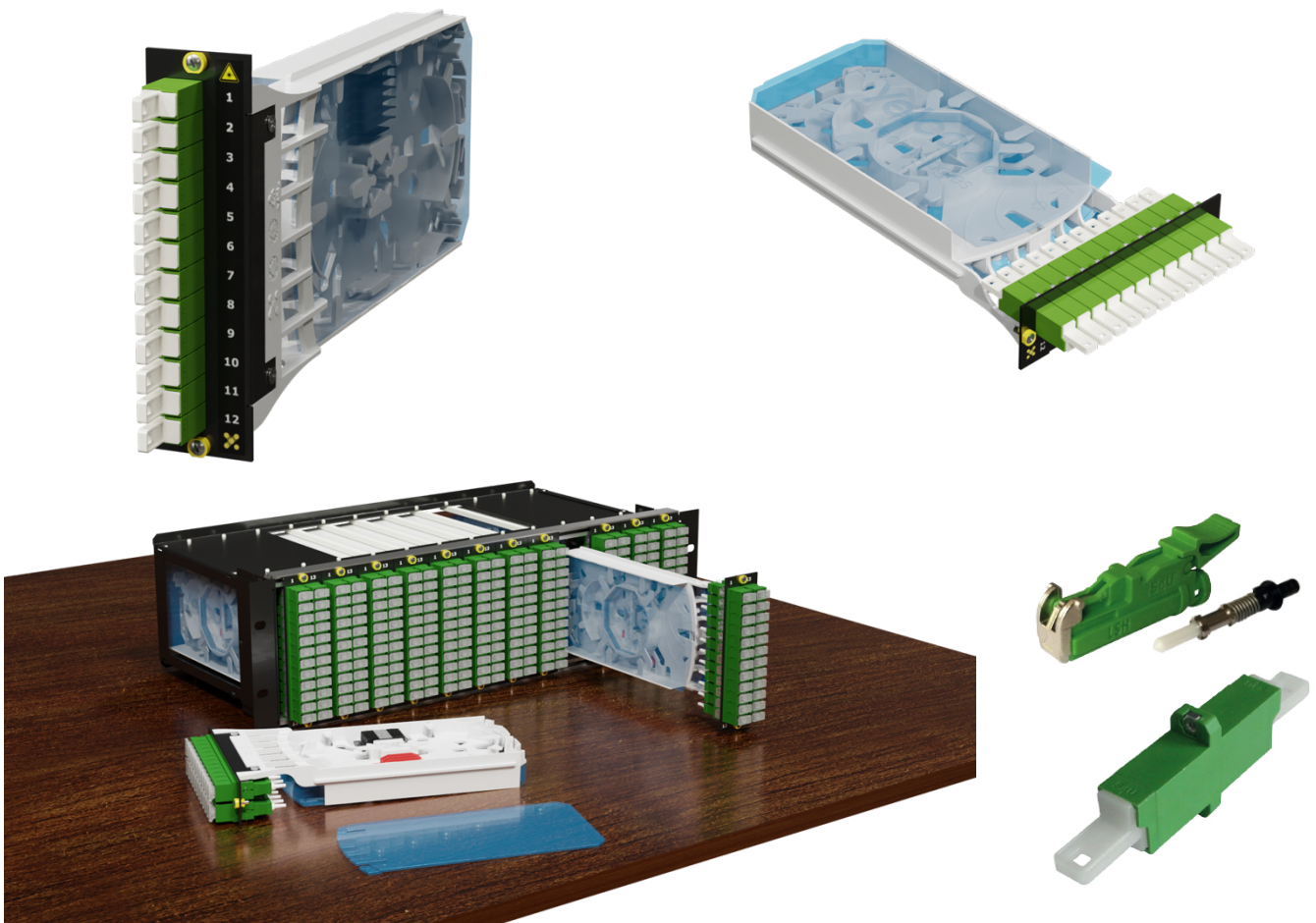


## FiberOptic Compact Module 7hp 12x LSH connector



Compact module, 3U height and 7hp width for the installation of single 3U sub-rack system

Each unit has the maximum capacity of 12 optical connections in LSH but also can be assembled with SC or LC connector.

The front plate has identification by means of being able to identify the optical ports.

The module is packaged in a unique cardboard box including splice protectors heat shrink type 45mm length.

There's the possibility to include optical splitters in various divisional ratios.

## Ready to ASSEMBLE

The module can be assembled in several versions according to each customer specification:

### a) Frontal Panel

- 1) Light Grey RAL7035
- 2) Smooth Black RAL9005

### b) LSH Adaptors

- (1) Simplex with plastic flange and integrated M2 screw nuts
- (2) Simplex with short flange for snap mount
- (3) Simplex HIGH POWER



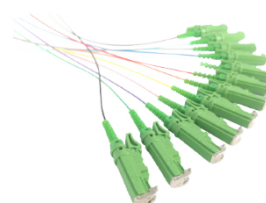
### c) Pigtails E2000/APC easy strip type

#### (1) Type of Fibre

- (a) G652D
- (b) G657A2

#### (2) Easy Strip tube 0,9mm

- (a) White
- (b) Yellow
- (c) 12 colors coded in sequence according to customer color code\*



#### (3) Fibre Termination in the fusion zone

- (a) With termination to 900um staggered ends
- (b) With 250um termination ends, or be it with bare fibre ends
- (c) Ready-to-Splice or be it with bare fibre ends and fitted with fusion splice Protectors, duly identified from 1-12

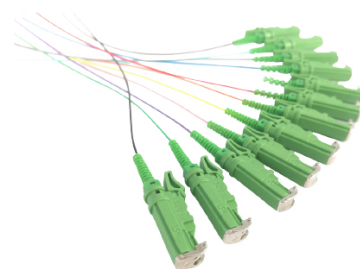
## (4) Type of polishing and termination of the SC/APC connector

- (a) 0,1dB Class  $\leq 0,06\text{dB}$  mean |  $\leq 0,15\text{dB}$  97% of sample
- (b) Grade B  $\leq 0,12\text{dB}$  mean |  $\leq 0,25\text{dB}$  97% of sample
- (c) Grade C  $\leq 0,25\text{dB}$  mean |  $\leq 0,50\text{dB}$  97% of sample
- (d) HIGH POWER  $\leq 0,10\text{dB}$  max.



## \* Color code according to standard

Number	ANSI/TIA-598	IEC	Deutsche Telekom	Swisscom
1	blue	blue	red	red
2	orange	yellow	green	green
3	green	red	blue	yellow
4	brown	white	yellow	blue
5	gray	green	white	white
6	white	violet	gray	violet
7	red	orange	brown	orange
8	black	gray	violet	black
9	yellow	turquoise	turquoise	gray
10	violet	black	black	brown
11	heather violet	brown	orange	heather violet
12	turquoise	heather violet	heather violet	turquoise



## Option to include Optical pre-connectorised Splitters



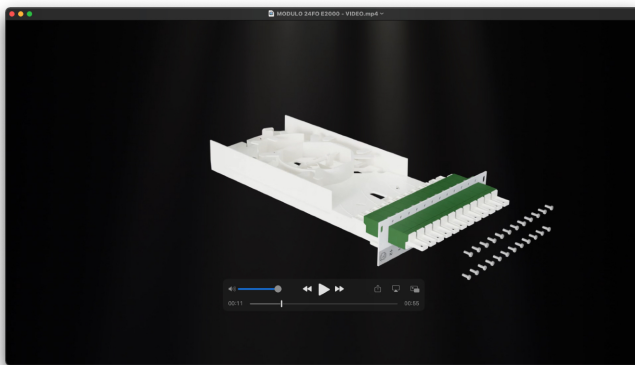
The optical Splitters that Yelco utilizes in its products are manufactured by ENSURE. With more than 1,5 million splitters manufactured in 2020, ENSURE is world renown by the Telecom industry as being one of the Premium manufacturers for the level of connectivity solutions, offering a quality service above the average.



## Possible Configurations

- ✘ 4 units Splitter 1:2
- ✘ 2 units Splitter 1:4
- ✘ 1 units Splitter 1:8
- ✘ 3 units Splitter 2:2
- ✘ 2 units Splitter 2:4
- ✘ 1 units Splitter 2:8

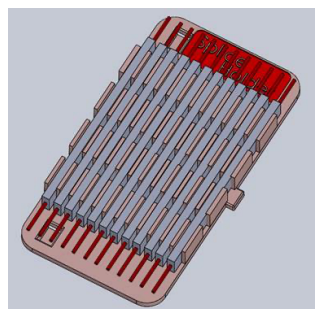
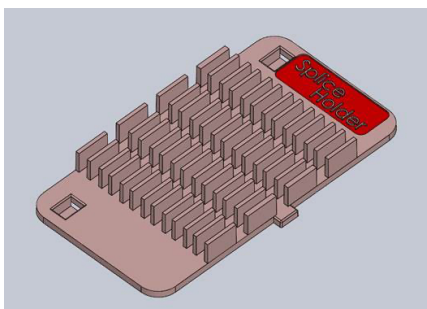
## Online Video demonstration



<https://drive.google.com/file/d/15ey5tMebjOlcnsGFlf2l1rd7Pdiloitg/view>

## Under development

For the German telecom market Yelco is developing a new splice holder for crimp (ANT) type



End of Technical Specification  
V2\_Proj FA082