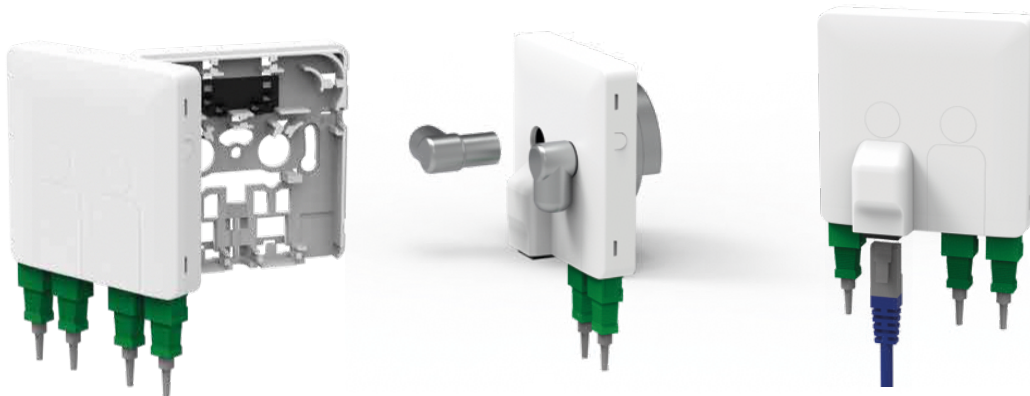


3Tech Customer Wall Outlet



Application & Product Description

Easy, Fast and Slim. The excellence in innovation and design.

The 3Tech Fibre Optic Wall Outlet is used to terminate fibre cable, UTP/FTP cable and coaxial cable in the user home.

This solution incorporates in a single box the "Customer FO Wall Outlet", " Jack RJ45 with box cat.x", "Jack RJ45 with plate cat x (flat module) " and " Wall plastic (housing) for wall outlet CATV " all-in-one.

The 3Tech Fibre Optic Wall Outlet allows multiple configurations:

- 4 SC adaptor simplex or 4 LC adaptor duplex and 1 wall outlet CATV/DATA
- 3 SC adaptor simplex or 3 LC adaptor duplex, 1 wall outlet CATV/DATA and 1 Keystone RJ45
- 2 SC adaptor simplex or 2 LC adaptor duplex, 1 wall outlet CATV/DATA and 1 Keystone RJ45
- 2 SC adaptor simplex or 2 LC adaptor duplex and 1 Keystone RJ45
- 2 SC adaptor simplex or 2 LC adaptor duplex and 2 Keystone RJ45

- 2 SC adaptor simplex or 2 LC adaptor duplex and 1 wall outlet CATV/DATA

Fiber management features ensure a minimum bend radius of 25mm is maintained as the bare fiber is routed through the outlet. Screw holes allow for easy installation and positioning. Alternatively, the recessed base means the unit can be fastened with adhesive or even hot glue, maintaining the outlet flush to the wall.

The wall outlet is made from ABS polymer with a quality design and surface finish. If required can be produced with special plastic components in order to have LSZH and Fire-Retardant features. The cover can be customized with the network operator's logo. Tamper proof latches secure the cover to the base.

The unit can be supplied with adaptors and pigtails if required or even pre-terminated with box.

With the new accessory "3Tech Wall Outlet CATv Box" allows to incorporate an Wall Outlet CATV Box in 3Tech Fibre Optic Wall Outlet.

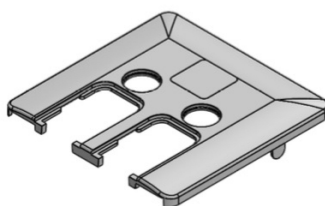
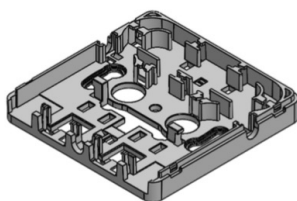
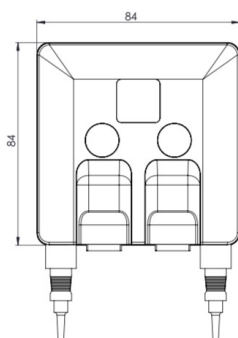
Technical Data

Dimension (mm)	H	W	D
	84	84	15,5
Adaptors Type	SC Simplex, LC Duplex, Keystone RJ45, F		
Number splices	8 (up to 45mm)		
Weight (Kg)	0,048		
Housing material	ABS		
	ABS LSZH FR (requested by the customer)		
Colour	RAL 9003 white		
Mechanical protection	IK07		
IP Protection	IP43		

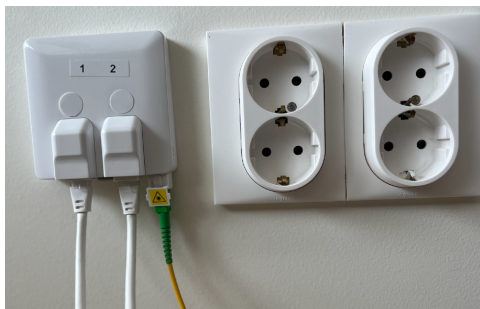
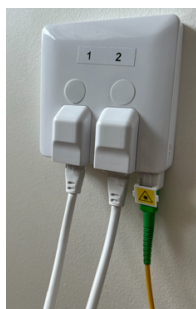
Features & Benefits

- Maximum FO capacity: 4x SC simplex or 4x LC duplex
- Supports three technologies: Fiberoptic, Coaxial and Ethernet
- Multiple configurations
- Technician choose the best setup for installation
- Cable entry at the base of the unit or through the rear
- Recessed base use with adhesive or hot glue
- Can accommodate up to 8 splice sleeves (up to 45mm)
- High quality surface finish
- Hi-tech design
- Tamper-proof latches
- Customer logo injected at the cover
- Customized full cover with customer design

Technical Diagrams



Additional Product Images



End of Technical Specification
V2_Proj FA056