

P | Cabling

Data sheet

Page 1/4

OpDAT HP 2xLC-D APC (green) OS2 splice, without lock, size S

P/N

1503597602-E

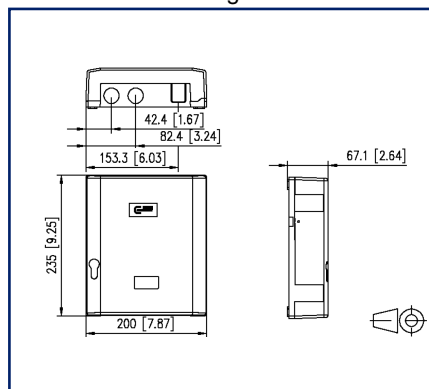
EAN 4251394600703

2021/02/19

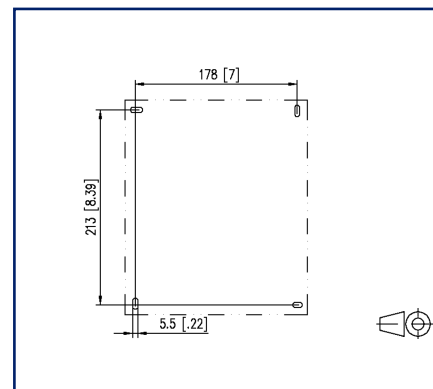
Illustrations



Dimensional drawing



Cut-out



See enlarged drawings at the end of document

Product specification

- Fiber optic splice and distributor housing to be used as building transition point
- Equipped with LC-D adapters and LC pigtails
- Cover locking by locking latch, can be sealed
- Cover can be very easily removed to facilitate mounting
- Splice tray for easy mounting and maintenance with a maximum of protection of the fibers with fiber transposition option and place to store fiber excess lengths
- Available with or without lock
- Strain relief for cables and patch cords
- With mounting and fastening option for gas and/or water blockers
- Patch cord output with flexible lamella seal
- Two cable entries for M20/25, one M20 cable gland included
- Fastening option for optical couplers
- Structured ASA (acrylic ester-styrene-acrylonitrile) in RAL 7035, extremely resistant plastic material, impact resistant and weatherproof
- Protection class according to IEC 60529: IP54
- Variants: equipped with up to 6 LC-D adapters and up to 12 LC pigtails, each in blue (OS2) or LC-D APC, each in green (OS2)

P | Cabling

Data sheet

Page 2/4

OpDAT HP 2xLC-D APC (green) OS2 splice, without lock, size S

P/N

1503597602-E

EAN 4251394600703

2021/02/19

Technical Data

General Data

Fields of application	Structured building cabling, Office Data center
Transmission technology	Fiber optic
Color	green
Dimensions	
Dimension (L x W x H)	67.1 mm x 200 mm x 235 mm
Dimension (L x W x H)	2.642 in. x 7.874 in. x 9.252 in.
Number of cables/ cores	4
Cable Type	pigtail(s)
Fiber class	OS2 (ISO/IEC 11801/EN50173 & IEC 60793-2-50 B1.3, B6_a & ITU-T G.657.A1, G.652.D)
Mode type of the fiber	Singlemode
Shape	APC (Angled Physical Contact)
Fiber construction	9/125 µm

Connections/interfaces

Connector technology interface 1	LC-D Couplers
Connector technology interface 2	LC-D Couplers
Number of ports interface 1	6
Number of ports interface 2	6
Number of equipped ports interface 1	2
Number of ports interface 2 equipped	2
Number of ports with dust protection interface 2	2

Optical characteristics

Insertion loss	max. 0,3 dB
Return loss	min. 65 dB

Mechanical data

Connector type	duplex
Life - Number of mating cycles	min. 1000
strain relief	yes



P | Cabling

Data sheet

Page 3/4

OpDAT HP 2xLC-D APC (green) OS2 splice, without lock, size S

P/N

1503597602-E

EAN 4251394600703

2021/02/19

Technical Data

Materials and material properties

Material - Housing	Plastics
Material - Sleeve	ceramic, slotted
Material - Coupler housing	Plastics
RoHS	compliant

The product meets the following standards

Fibre optic connector interfaces	IEC 61754-20
Optical fibers: Indoor optical cables	
Sectional specification for class A B single-mode fibres	ISO/IEC 60793-2-50 type B.1.3 & B6_a
Optical fibers - Interconnecting devices and passive components - basic test and measuring methods	
Fibre optic interconnecting devices and passive components	IEC 61300-3-4
Fibre optic interconnecting devices and passive components	IEC 61300-3-6
Fibre optic interconnecting devices and passive components	IEC 61300-3-35
Standard colours for insulation for low-frequency cables & wires	IEC 60304
ITU-T standard	ITU-T G.657.A1 compatible with ITU-T G.652.D

Classifications

ETIM 7.0	EC001409
----------	----------

Packing details

Type of packaging	1 pc(s) / box
Packaging dimension	265 mm x 215 mm x 80 mm
Packaging dimension	10.433 in. x 8.465 in. x 3.15 in.



P | Cabling

Data sheet

Page 4/4

OpDAT HP 2xLC-D APC (green) OS2 splice, without lock, size S

P/N

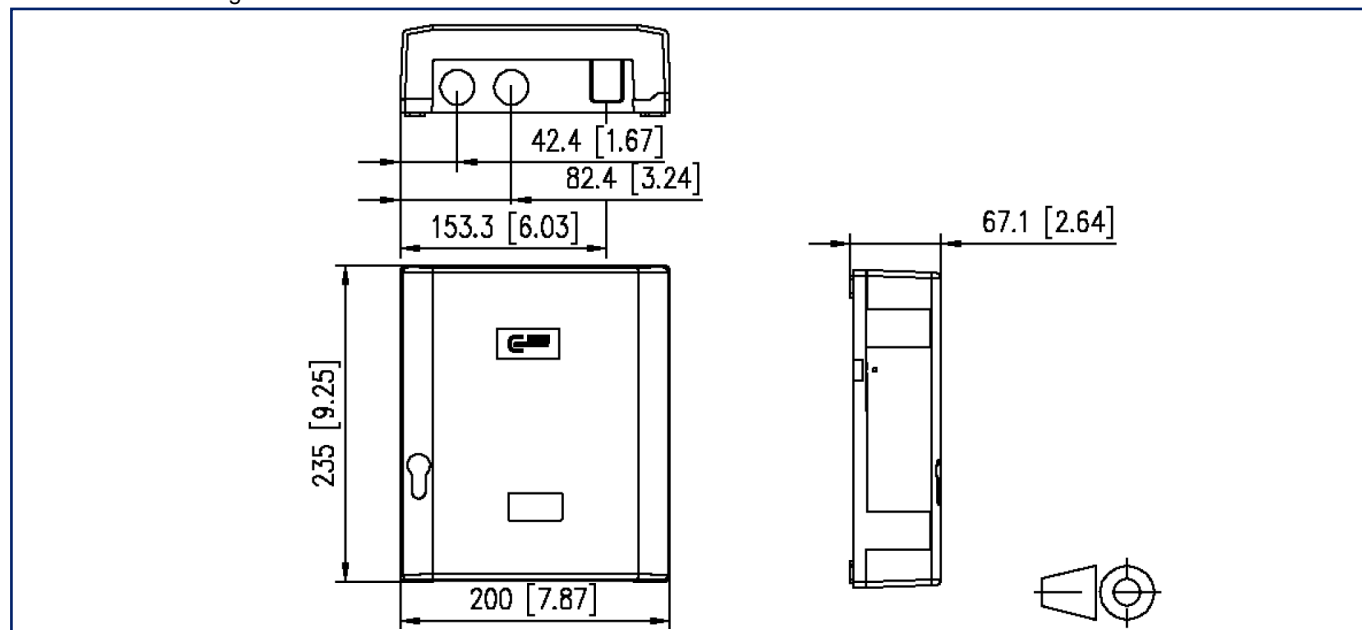
1503597602-E

EAN 4251394600703

2021/02/19

Illustrations

Dimensional drawing



Cut-out

