

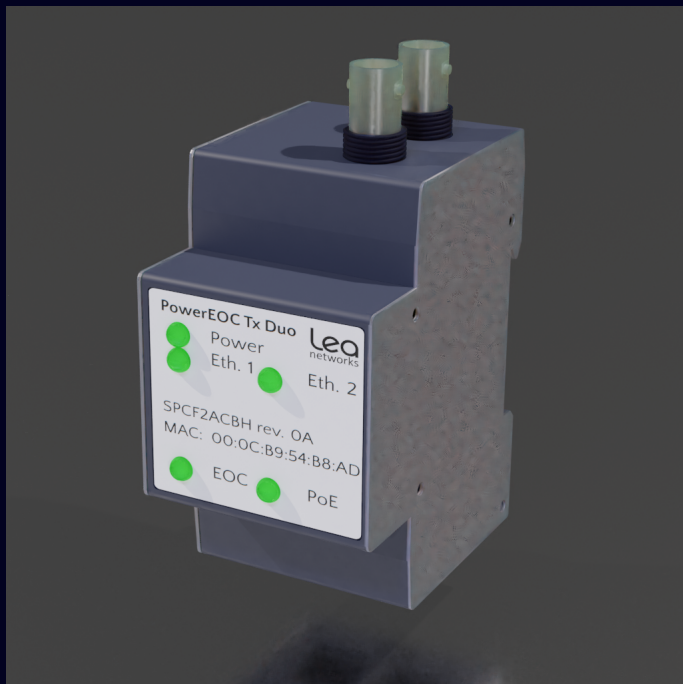
# PowerEOC Tx Duo – Datasheet Ed01

PoE adapter for IP cameras over coax  
with dual Ethernet connection



## 1 Product description

---



Thanks to the PowerEOC standard, it is possible to transmit DC voltage and high-speed data over a standard  $75\ \Omega$  coaxial cable. The DC voltage is typically 54 V with current up to 1.6 A, the bitrate can be as high as 100 Mbps thanks to the use of HomePlug-AV2 technology.

The *PowerEOC Tx Duo* is a compact and robust adapter especially designed to connect PoE appliances (like IP cameras, WiFi access points, displays) to PowerEOC coax cables. Its internal circuitry minimises the inrush current at power-up to prevent packet losses on neighbouring devices. It is also capable to regenerate optimal PoE voltage even if the voltage on the coax is reduced due to resistive losses.

A pass-through option offers a second coaxial connector to optimally daisy-chain devices with better performance compared with BNC Tee connector.

## 2 Features

---

- PowerEOC certified – ETSI TS 105 176-2
- Low power consumption (typ. 3 W)
- PoE compliant output up to 90 W
- Compact footprint, compatible with DIN rails
- Protected against dust and water – IP54
- Protected against high-voltage transients and over-currents
- Protected against RF interferences

## 3 Specifications

---

Standard compliance: PowerEOC , IEEE P1901

EMC: EN50561-1, EN50412-2-1

Safety EN62368-1

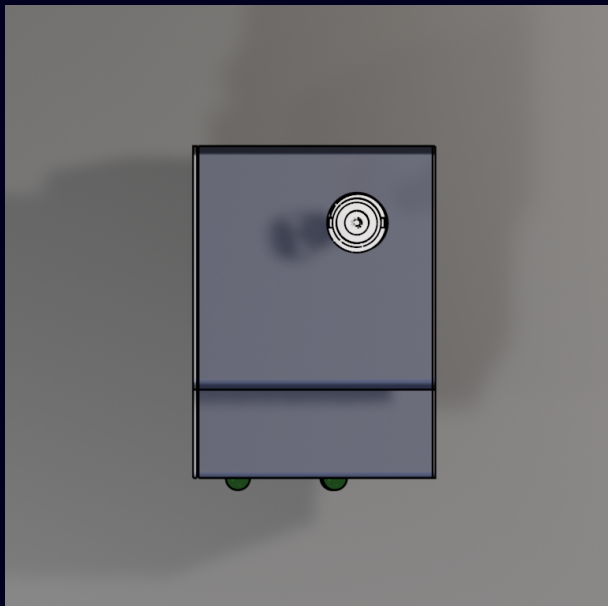
Temperatures Operating:  $-25^{\circ}\text{C}$  to  $+50^{\circ}\text{C}$   
Storage:  $-40^{\circ}\text{C}$  to  $+80^{\circ}\text{C}$

# PowerEOC Tx Duo – Datasheet Ed01

PoE adapter for IP cameras over coax  
with dual Ethernet connection



## 4 Mechanical design



Overall dimensions:

Height: 108 mm

Width: 45 mm

Depth: 68 mm

Without BNC connectors and DIN rail hook:

Height: 85 mm

Width: 45 mm

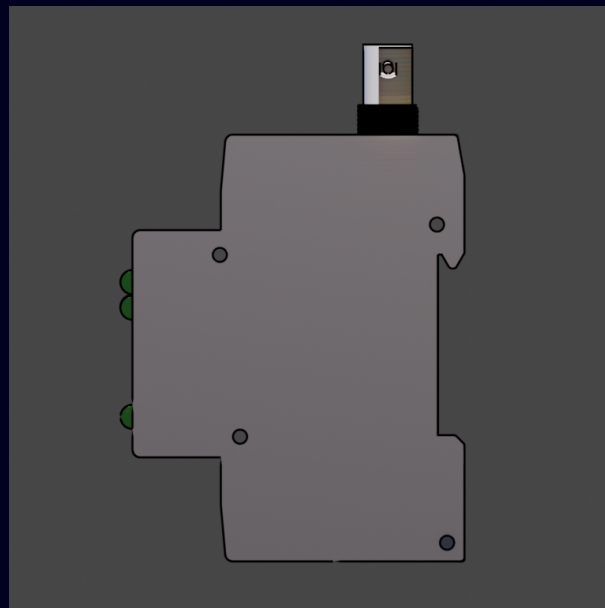
Depth: 68 mm

Weight:  $\approx$ 150 g

Top view



Front view



Right view

## 5 DIN rail mounting

The product can be mounted on a standard 35 mm DIN rail. It is equipped with a hook to ease installation and prevent sliding.

# PowerEOC Tx Duo – Datasheet Ed01

PoE adapter for IP cameras over coax  
with dual Ethernet connection



## 6 Part numbers

Part number	Description
SPCF2ACBH-WMLE01	Power EOC Tx adapter with 2 Ethernet ports 100 Mbps. Second Ethernet port supports PoE up to 90 W.
SPCF2ADBH-WMLE01	Power EOC Tx adapter with 2 Ethernet ports 100 Mbps and coaxial pass-through. Second Ethernet port supports PoE up to 90 W.
DIVX1276XX-WMLE01	IP66 / NEMA Class 4 enclosure, (UV, water, ice and snow resistant) for outdoor use.
CABX1079XX-WMLE01	40 cm Cat 5 flat Ethernet cable white

## 7 Distributors

**Amazon** <https://amazon.fr> and search for 'LEA Networks'

**Twoosk** <https://twoosk.com> and search for 'LEA Networks'

**LEA Networks France (HQ)**  
132 boulevard de Verdun  
92400 Courbevoie  
Tel. +33 1 49 97 05 30

**LEA Networks USA**  
6264 Oakton St.  
Chicago IL 60053  
Tel. +1 847-673-1853

**LEA Technologies China**  
深圳市宝安区燕罗街道山门社区一工业区1号厂房二301  
Tel. +86 136 03 01 88 45

Product specification is subject to change without notice. LEA Networks disclaims any and all liability for any errors, inaccuracies or incompleteness contained in this datasheet.

**LEA Networks** – <http://www.lea-networks.com> – mail: [sales@lea-networks.com](mailto:sales@lea-networks.com)