

Unshielded Patch Panel Installing Instruction

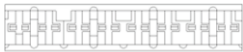
1



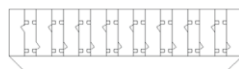
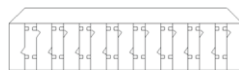
180°Angle Type(12、16、24、32、48、72、96 Port)

2

IDC(3 Options)



110 D Type



Krone Type



110 D&Krone IDC
Compatible

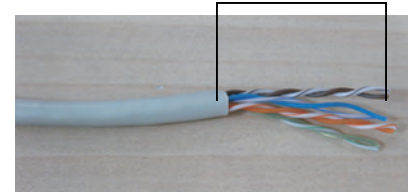
Color Coding Information

T568A		T568B	
Pin 5	White/Blue	Pin 5	White/Blue
Pin 4	Blue	Pin 4	Blue
Pin 1	White/Green	Pin 1	White/Orange
Pin 2	Green	Pin 2	Orange
Pin 3	White/Orange	Pin 3	White/Green
Pin 6	Orange	Pin 6	Green
Pin 7	White/Brown	Pin 7	White/Brown
Pin 8	Brown	Pin 8	Brown



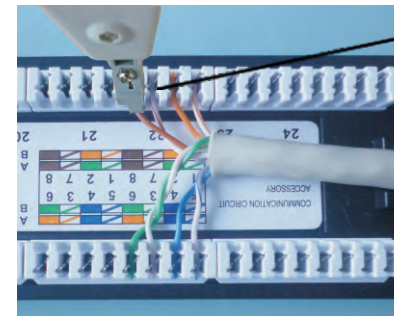
3

30mm



Strip approximately 30mm of the cable jacket, and separate to 4 pair each.

4



Cut Outside

Follow the direction on the colour-coding sticker for T568A or T568B wiring.
Use the impact tool to crimp and connect the wires.

5



Cable Tie

Use the Cable Tie to manage the cables, then complete the installation.