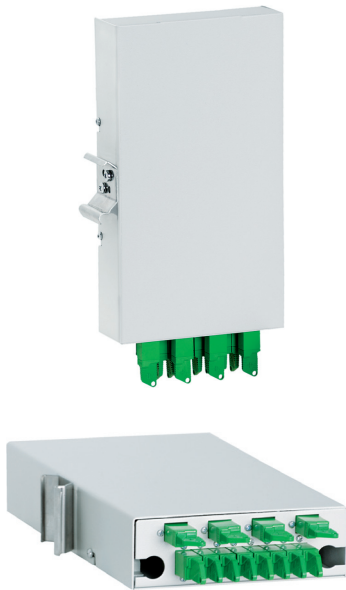


PSW-12/DIN FIBRE OPTIC DISTRIBUTION BOX



Fibre Optic Distributio Box
PSW-12/DIN

FEATURES:

- wall or 35 mm DIN rail mounted
- easy installation in telecom and power cabinets
- termination of up to 12 fibres, 2 cable entries
- back or side mounting
- captive screw mounted lid

- cable strength member clamps
- installation and handling instructions
- installation kit (for DIN rail)

THE SET INCLUDES:

- KS-Q splice tray
- cable ties, spiral protection sleeve

TECHNICAL SPECIFICATIONS:

	PSW-12/DIN
number of splice trays	1 x KSQ
maximum number of splices	12
adapter capacity	12
connector standard	E-2000, SC, FC, ST, LC
recommended pigtail length [m], 0.9 mm buffered fibre	1,5
recommended pigtail length [m], 2 mm cable diameter	-
number of outdoor cable entries	2
maximum diameter of input cable [mm]	12,8
dimensions: width/height/depth [mm]	40/220/120
weight [kg]	1,2
housing material/colour	steel sheet/RAL 7035
mechanical protection IK	IK 08
environmental protection IP	IP20

ORDERING:

PSW-DIN-12/K/12E2A - wall mounted Fibre Optic Distribution Box equipped with 12 pigtails and 12 E2000/APC

