

## TLT 16-way taps



- **Compact 16-way tap**
- **Ingress Safe™** - unique passive ingress reduction technology
- **Modem Safe™** - unique surge protection and intermodulation reduction solution
- **High port-to-port isolation performance**
- **CPD Safe™** - robust zinc die-cast housing with NiSn plating
- **F-connector inner spring accepts 0.56 to 1.30 mm inner conductors**
- **Full 5 to 1006 MHz frequency range**
- **Exceeds EN Class A screening requirements**



## Overview

Products within the TLT range excel both in electrical and mechanical performance. Though designed for use within indoor environments, they are also specified for use within street-side plant. The taps are easy to install with a tough, compact housing and some models are stackable. All F-connector contacts meet the SCTE standards (ANSI SCTE 02 2006). The material of the inner spring has been designed for connecting coax cables with an inner core of 0.56 to 1.30 mm. It retains this elasticity and provides effective clamping force even when varying thicknesses of inner conductor are connected in succession.

The intermodulation performance, which is an important factor in high level return path signals, has been greatly improved through a newly developed ferrite and specially designed circuits. The high frequency shielding exceeds Class A requirements (EN-50083-2:2006) over the whole frequency range from 5 MHz to 1000 MHz. The taps have an epoxy sealed tongue and groove back cover.

### Ingress Safe

Our patented Ingress Safe technology uses a phase cancellation technique to considerably reduce ingress created within the home. It has no adverse effect on the CATV spectrum and is transparent to the forward and reverse path signals.

- Significantly reduces noise on CATV networks, improving network performance
- Field tests show Ingress Safe units in the distribution network can deliver improvement in the carrier to noise ratio that averages from between 3 dB and 12 dB, depending on the network topology

- Prevents or delays the need to deploy technicians to rectify faults caused by the cumulative effects of ingress on network performance and customer service.

### Modem Safe

Modem Safe is a highly effective surge protection solution for sensitive network and in-home CPE. Based on passive circuits, the technology does not rely on discharge tubes, extending the lifespan of the solution.

- Blocks high and low voltage pulses and unwanted DC voltages
- Prevents internal ferrites within the product from becoming magnetised (avoiding deterioration in the performance of CPE)
- Drives fewer reported faults
- Improves customer service
- Reduces truck rolls

### CPD Safe

CPD (Common Path Distortion) is well known for producing signal interference on networks. It is caused by electrolytic corrosion or the oxidation of dissimilar metals when in close contact. CPD Safe technology protects against CPD.

- Removes a primary cause of CPD
- Reduces signal interference on the network
- Drives fewer reported faults
- Reduces truck rolls
- Improves customer service

### Specifications

		MHz	16-14/I-T		16-17/I-T		16-21/I-T		16-24/I-T		16-27/I-T	
			Typ	Max	Typ	Max	Typ	Max	Typ	Max	Typ	Max
Insertion loss (dB)	In to Tap <sup>1</sup>	5 - 550	14.0	15.3	17.0	18.0	21.0	22.0	24.0	25.0	27.0	28.0
		550 - 862	14.0	15.8	17.0	18.3	21.0	22.3	24.0	25.3	27.0	28.3
		862 - 1006	14.5	16.5	17.5	19.0	21.0	23.0	24.5	26.0	27.5	29.5
Return loss (dB, min) <sup>2</sup>	In/Tap	5 - 40	20.0		20.0		20.0		20.0		20.0	
		40 -1006	20.0		20.0		20.0		20.0		20.0	
Isolation (dB, min)	Tap to Tap	5 - 470	30.0		30.0		30.0		30.0		30.0	
		470 - 862	25.0		25.0		25.0		25.0		25.0	
		862 - 1006	22.0		22.0		22.0		22.0		22.0	
Screening efficiency (dB) <sup>3</sup>		5 - 300	95.0		95.0		95.0		95.0		95.0	
		300 - 470	90.0		90.0		90.0		90.0		90.0	
		470 - 950	85.0		85.0		85.0		85.0		85.0	
		950 - 1006	65.0		65.0		65.0		65.0		65.0	
Ingress Safe			Ports 5-8 & 13-16									
Intermodulation p+q (dBc, min) <sup>4</sup>			-115.0									
Surge Class conformance <sup>5</sup>	All ports		1 kV 1.2/50µs									
Dimensions (mm)	L x H x D		217x51x35									
Impedance (Ohm, typ)			75									
Equipment Approval	CE											

#### Remarks

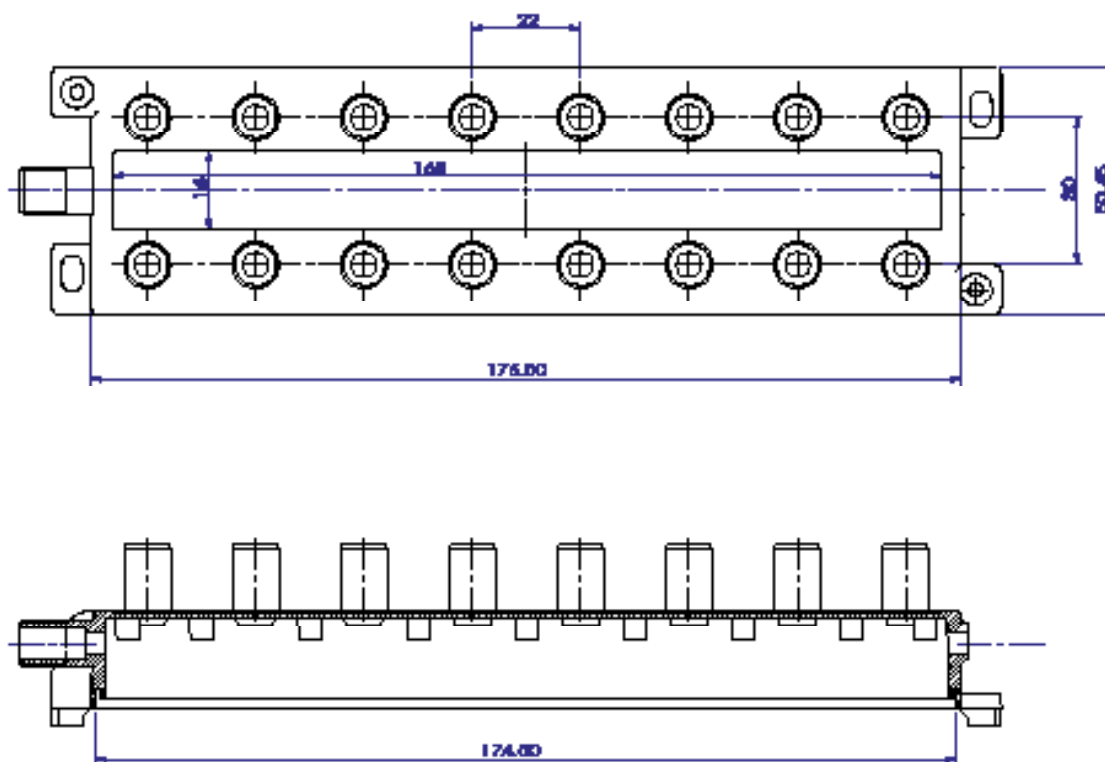
1	Where frequency is above 40 MHz, deduct 1.5 dB/Octave
2	Tested according to EN 50083-2 2006
3	Tested according to SCTE IPS-TP-403
4	Two carriers (50 & 55MHz), out to in, @ 120dBµV, after 10 pulses (25V/1,2µS rise time/500µS duration) at all ports Two carriers (50 & 55MHz), out to in, @ 120dBµV, after 1 pulse 1KV (1,2µS risetime/50µS fall time) at Input.
5	Tested according to IEC 61000-4-5 2005
	DC power blocking all ports

#### Ordering information

Item Name	Article number	Item Name	Article number
TLT-16-14/I-T	10931615	TLT-16-24/I-T	10931619
TLT-16-17/I-T	10931616	TLT-16-27/I-T	10931620
TLT-16-21/I-T	10931618		

## Mechanical & environmental specifications

Performance parameter	Details	
Port Sealing	Environmental (epoxy)seal	All F-ports
Connectors	Input, Output & Tap ports	F-female
	ANSI/SCTE 01 2006 (Outdoor) comply	All F-ports
	F-connector Torque (max)	3.95Nm (88.51 In-Lb)
Materials	Housing & Back Lid	NI-Sn plated zinc die-cast
	F-spring	Silver plated beryllium copper
WEEE (2002/96/EC)	Complete product	Marked with wheelie bin logo
RoHS (2002/95/EC)	Complete product	Complies to RoHS



© Copyright 2014 Technetix Group Limited. All rights reserved.

This document is for information only. Features and specifications are subject to change without notice. Technetix, the Technetix logo, Ingress Safe, Modem Safe and certain other marks and logos are trade marks or registered trade marks of Technetix Group Limited in the UK and certain other countries. Other brand and company names are trade marks of their respective owners. Technetix protects its technology and designs by registering patents, trade marks and designs in Europe and certain other countries.