


LL-AD-DX-SCSC-mmOM4/VIOLET

— Adapter SC-SC, duplex, multimode in violet color according to OM4 specifications —

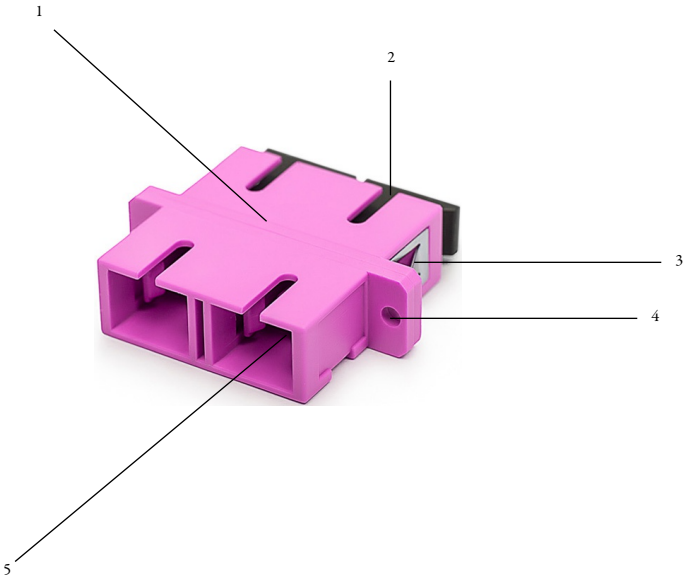
Adapter: plastic body, zirconia-ceramic (ZrO<sub>2</sub>) sleeves

Standards: Adapters are designed and tested to conform the requirements of IEC, CECC, EIA/TIA & Telcordia (Bellcore)

APPLICATION

SC-SC adapters are considered to be one of the most common inter-connection devices in fiber optic networking. The duplex design allows up to 48 connections within the given space of a 1U front plate of a patch panel. – The SC to SC duplex adapter for multimode applications features a plastic compound body with a push-pull device, including zirconia-ceramic sleeves. Its fixation at the panel is provided by snap-on clamps and two screwing devices. - The product is manufactured in accordance to environmental standards EN187000 and IEC60794-1-2  .

SC-SC/DUPLEX ADAPTER SET



CONTENTS

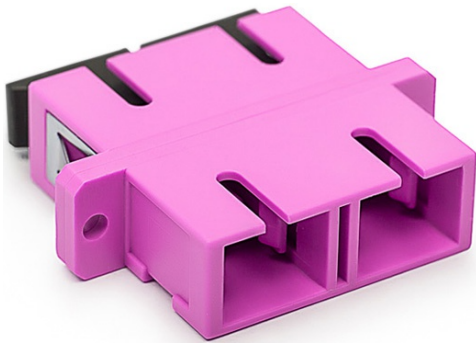
1 - ADAPTER BODY

2 - DUST COVERS

3 - FIXATION SNAP-ON CLAMPS

4 - FIXATION SCREWING DEVICES

5 - SLEEVES



CHARACTERISTICS

Type	: SC - SC
Version	: duplex, incl. dust covers
Application	: multimode
Material of sleeves	: zirconia-ceramic (ZrO <sub>2</sub> )
Material of body	: plastic compound, violet color
Fixation at panel	: snap-on clamps and screwing devices M2 x 6
Connection to inserting SC-connector	: push-pull
Typical attenuation	: ≤0.20dB (depending on accuracy of inserting connectors)
Mating cycles	: 1000 / typical increase after 1000 cycles ≤0.20dB
Temperature range	: -40°C to 85°C

