

LL-PP/V4M/1U-24LCDX-sm-FE

— Fiber optic patch panel 1U 19" extendable version, 24 x LCDX singlemode, splicing devices, 48 pigtails LC 9/125 1 m —

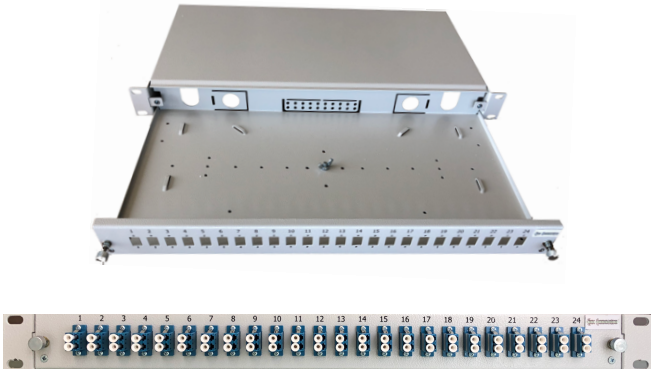
Grade steel

Coloring: RAL 9005 (black), RAL 7035 (light grey)

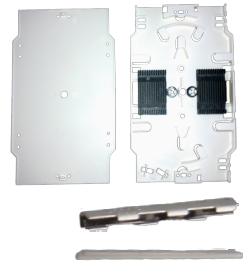
APPLICATION

Fumo's fiber optic panel solutions are developed to supply the essential elements of fiber cable management; connector and cable accessibility, bending radius protection, cable routing paths and physical protection. If these elements are executed correctly, the network can deliver its full competitive advantages. The 1 height unit, 19" width, extendable V4M version, with 24 adapters LC/DX singlemode, the full splicing devices for 48 fibers, and 48 fiber-pigtails LC 9/125µm 1 meter, comes fully equipped for plug&play integration. Standard RAL-colors: smooth grey RAL 7035 and smooth black RAL 9005 (customized colors and logo-prints are available on request).

PATCH PANEL



SPLICING ACCESSORIES

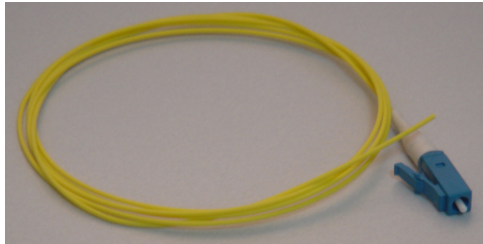


- Stackable splice tray max. 24 splices
- Splice comb (holder) max. 12 splices
- Splice protectors heat shrink or crimp

ADAPTERS



PIGTAILS



TECHNICAL SPECIFICATION

246Panel	: standard panel kit 24 outlets (12 adapters)
Adapters	: LC/DX singlemode
Capacity	: 24
Type	: rack mounting
Material of panel	: grade steel
Dimension	: 19", 1 height unit
Drawer look	: push-pull lock
Cable entry	: 2 x PG13.5 perforated 2 x PG13.5 open
Coating	: powder coating
Standard colors	: RAL 9005 - black RAL 7035 - light grey (other colors available on request)
Colors of numbering	: white or black (other colors available on request)
Splicing devices	: splice tray & splice holders for 24/12 connections (see details on the left)
Adapters	: LC-LC duplex, singlemode, plastic compound blue color, phosphor-bronze (PhBr) sleeve, snap-on- and screwing devices M2 x 6, push-pull-connection for inserting connectors, typical attenuation ≤ 0.20dB (dep. on accuracy of inserting connectors), 1000 mating cycles, temperature range -40°C to 85°C (detailed specs, see data sheet LL-AD-LCLC-DX-sm)
Pigtails	: Fiber-pigtail LC 9/125, 1 meter, typical attenuation ≤0.25 dB, typical return loss ≥50 dB, temperature range -10°C to 65°C, fiber in yellow or 12 colors acc. to VDE-norm, easy-strip version, boot in white color, 9/125 fiber according to ITU-T G.652.D (detailed specs, see data sheet LL-PGT-LC-sm)

PACKAGING

- Robust carton box
- Accessories can be plug&play mounted, or supplied in a separate re-usable plastic bag

