

LL-PT12FO-MPO(F)MPO(F)-sm

— Patchcord 12 fiber cable, low loss MPOfemale-MPOfemale, singlemode, LSZH —

Connectors: MPO(F) – plastic body, silica/plastic compound ferrule

Cable: 12-fiber cable 3mm – 9/125 G.652.D, LSZH sheath acc. to IEC60332, IEC 61300

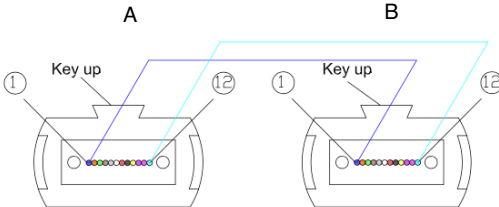
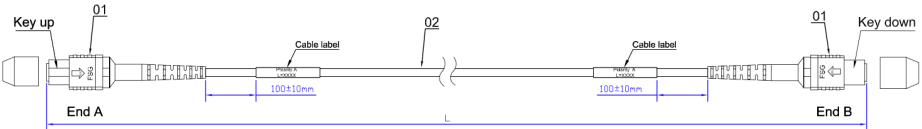
STANDARD COMPLIANCE

All components of/and the final product are designed and tested to conform the requirements ISO/IEC 11801, EN 50173, EIA/TIA 568, IEEE 802, IEC 61754-07, ANSI/ICEA-596, IEC 60793, IEC 60794, IEC 61300-3-35, IEC 60331, IEC 60332, ITU-T G.652.D, Bellcore/Telcordia GR-1435-CORE. All components are RoHS compliant and do not and will not contain any restricted hazardous substances as detailed in RoHS 2002/95/EC.

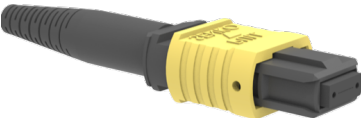


PERFORMANCE

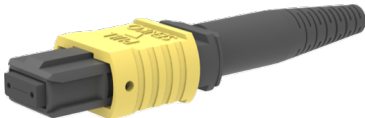
Attenuation	: ≤0.35 dB
Return loss	: ≥50 dB
Repeatability	: ≤0.1 dB
Durability	: ≤0.2 dB (typical value after 1000 matings)
Interchangeability	: ≤0.2 dB
Temperature range	: -40° C to 70° C
Color of sheath	: yellow (other colors on request)
Fiber	: semi-tight buffer (tight buffered on request)
Color of boot	: black (other colors on request)
Packaging	: 1 pc./unit (other packaging on request)



TECHNICAL PERFORMANCE



MPOfemale	TYPE	MPOfemale
Silica/plastic compound	MATERIAL OF FERRULE	Silica/plastic compound
plain	CONNECTOR SURFACE	plain
glue	CONNECTION OF FIBER	glue
plastic compound, yellow	MATERIAL OF BODY	plastic compound, yellow
push-pull	CONNECTION AT ADAPTER	push-pull
1000	MATING CYCLES	1000
126µm ± 1µm	FERRULE DRILLING	126µm ± 1µm



MECHANICAL PERFORMANCE CABLE

Weight	: 9.4kg/km (nominal)
Temperature range	: -40°C to 70°C
Bending radius (static/dynamic)	: 10 x OD / 20 x OD
Tensile strength (short/long term)	: 100N / 50N
Crush resistance (short/long term)	: 500N/dm / 100N/dm
Fire load	: 0.2MJ/m

OPTICAL PERFORMANCE FIBER (acc. to ITU-T G.652.D)

Item	Unit	Values
MODE FIELD DIAMETER @ 1310nm	µm	9.1 ± 0.4
MODE-FIELD DIAMETER @ 1550nm	µm	10.3 ± 0.5
CORE/CLADDING CONCENTRICITY ERROR	µm	≤1.0
CLADDING DIAMETER	µm	125 ± 0.7
CLADDING NON-CIRCULARITY	%	≤1.0
COATING DIAMETER	µm	242.5 ± 7.5
COATING NON-CIRCULARITY	%	≤6
COATING/CLADDING CONCENTRICITY ERROR	µm	≤12
ATTENUATION @ 1310nm	dB/km	≤0.36
ATTENUATION @ 1550nm	dB/km	≤0.22
MACRO-BENDING - 100 turns x R25mm @ 1550nm	dB	≤0.05
MACRO-BENDING - 1 turn x R16mm @ 1550nm	dB	≤0.05
CABLE CUT-OFF WAVELENGTH	λ <sub>cc</sub>	≤1260

- OPTICAL FIBERS  
9/125µm  
CLADDED OPTICAL FIBERS  
12 x 9/242.5±7.5µm  
colors:  
1 - blue  
2 - orange  
3 - green  
4 - brown  
5 - grey  
6 - white  
7 - red  
8 - black  
9 - yellow  
10 - purple  
11 - pink  
12 - aqua

Aramid yarns

OUTER SHEATH  
color: yellow  
diameter: 3 ± 0.1mm  
LSOH compound

