

LC

SENKO's Long Standing LC Connector License Offers Various Styles of LC Connectors and Adapters to Meet the Customers Need

LC PREMIUM UNIBODY Connector

LC

The LC Premium Unibody Connector molded with a Single body delivers maximum strength against mechanical tests including side loading test and TWAL tests. Manufactured to the highest standard, the LC Unibody connector is designed to meet and exceed the Verizon FOC TPR requirement and designed for the usage for the OSP application or where customers needs the highest quality product.

- Premium SM and Premium Low Loss SM (LS) are available
- Typical IL of 0.05 for LS SM and 0.08 for Premium SM Ferrule
- Various option of boots are available to meet your need
- PC Type and APC Type available

LC STANDARD (2PC) Connector

LC

The Original LC designed connector gives the maximum value for cost. Using high quality components, this connector meets IEC, TIA/EIA and the general requirement of GR-326.

- Available with Pre-assembled 1pc style or in a Multi piece kit
- Typical IL of 0.12 for Standard ferrules
- Various options of boots are available to meet your demand

FEATURES COMPARISON CHART

For LC Premium and LC Standard	PREMIUM UNIBODY LOW LOSS SM FERRULE	PREMIUM UNIBODY SM FERRULE	STANDARD 2PC SM FERRULE
LC License Holder	○	○	○
IL Average Against Master (UPC)	0.05	0.08	0.12
IL Mean Value Random Mating (UPC)	0.07	0.12	0.25
Verizon FOC TPR-9409	○	○	
GR-326 Core Issue 4	○	○	△
IEC, TIA/EIA JIS Spec	○	○	○
IEC Random Mating Grade A*	○		
IEC Random Mating Grade B*	○	○	
IEC Random Mating Grade C*	○	○	○
ROHS Compliant	○	○	○
UL 94V-0	○	○	○
Ruggedized Unibody Structure	○	○	
Universal Body For Sim-Dup-BTW	○	○	
6 Position Tuning After Assembly (UPC)	○	○	○
LC MINI Boots	○	○	○
Standard Boots	○	○	○
TWAL Proof 900µm Boots	○	○	○
Pre-assembled 1pc Style	○	○	○
Free Floating Ferrule	○	○	○
Metal Back Post	○	○	○
Crimp Tool CRT-701**	○	○	○

○ Complies with GR-326 issue 4 TWAL test with 4 wavelength △ Good for general usage

Note: *IEC 61753-1 **CRT-705 to be used for 1.2mm Unibody

TECHNICAL SPECIFICATIONS

Unibody Premium and Standard 2pc Connector

PRODUCT SERIES	TYPE OF CONNECTOR	IL AGAINST MASTER (dB)		IL RANDOM MATING (dB)	
		Average IL	Maximum IL	Mean IL	Maximum IL
Unibody Premium Low Loss SM	931-159-1xx, 932-159-1xx	0.05	0.15	0.07	0.15 ^{*1}
Unibody Premium SM	931-153-1xx, 932-153-1xx	0.08	0.20	0.12	0.25 ^{*2}
Unibody Premium APC Low Loss	931-159-3xx, 932-159-3xx	0.07	0.15	0.09	0.20
Unibody Premium APC	931-153-3xx, 932-153-3xx	0.10	0.25	0.14	0.30
Unibody Premium MM	931-251-2xx, 932-251-2xx	0.10	0.20	-	-
Standard 2pc + Standard SM Ferrule	911-151-1xx, 912-151-1xx	0.12	0.30	0.25	0.50 ^{*3}
Standard MM	911-251-2xx, 912-251-2xx	0.15	0.30	-	-

Singlemode

Operating Temperature	-40°C to +75°C
Durability	<0.2dB typical change, 500 matings*

IEC Random mating test IEC 61753-1

1 - To meet IEC Random Mating Grade A ($\leq 0.07\text{dB}$ mean, $\leq 0.15\text{dB}$ max for >97% of sample.

Grade A Spec is not finalized, above is a recommendation.

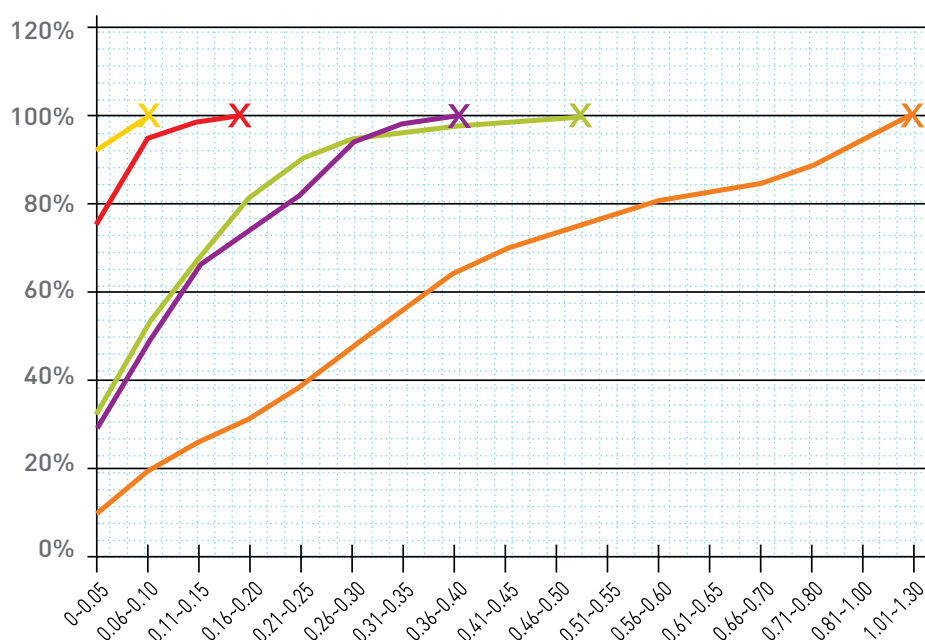
2 - To meet IEC Random Mating Grade B ($\leq 0.12\text{dB}$ mean, $\leq 0.25\text{dB}$ max for >97% of sample

3 - To meet IEC Random Mating Grade C ($\leq 0.25\text{dB}$ mean, $\leq 0.50\text{dB}$ max for >97% of sample

Random Mating IL

SENKO has categorized its connectors to reflect the IEC Random Mating specified grades A*, B, and C, allowing the end-user to make an informed decision when selecting connectors, of how finished patchcords using SENKO connectors will perform.

Random mating Insertion Loss



LC STANDARD 2PC

911, 912, 921, 922 Series

CONNECTOR	FERRULE TYPE	HOUSING	BOOT TYPE	BOOT COLOR
911 Preassembled Simplex	151 SM: Standard 125.5µm	1 SM: Blue	B MINI Boot 900µm	1 White
912 Preassembled Duplex	251 MM: Standard 127µm	2 MM: Beige	C MINI Boot 2.0mm	2 Blue
921 Kit Simplex		5 MM OM3: Aqua	D MINI Boot 3.0mm	3 Black
922 Kit Duplex		6 MM OM4: Heather Violet	2 2.0mm Original	4 Yellow
			6 3.0mm Boot	5 Red

900µm MINI Boot

2.0mm MINI Boot

3.0mm MINI Boot



Note: Other ferrule ID size are available
 SM 126µm SM 125µm MM 230µm MM 144µm

Features:

- The original 2pc LC Design
- SENKO's Standard Connector series gives the highest value for cost
- Pre-assembled one piece design and Connector Kit style available
- Meets and exceeds the TIA/EIA, IEC and JIS LC Specification
- Standard SM Ferrule typical IL against Master 0.12dB
- Crimp tool to be used CRT-701

LC CONNECTOR 1.2mm

The new LC Connector is as strong as a 3mm cable. Reduce your cable size, but keep the strength. The LC Connector for 1.2mm cable is fully compliant to GR-326-Core for Media 1.



CONNECTOR PC	FERRULE SIZE	HOUSING COLOR	CABLE SIZE	BOOT COLOR
931 LC Unibody Pre-Assembled Simplex	153 125µm	1 Blue	G 1.2mm	1 White
932 LC Unibody Pre-Assembled Duplex	251 MM 127µm	2 Beige		
933 LC Unibody Un-Assembled Simplex		5 Aqua		
934 LC Unibody Un-Assembled Duplex		6 Heather Violet		

931 - 153 - 1G1 ORDER CODE example

CONNECTOR APC	FERRULE SIZE	HOUSING COLOR	CABLE SIZE	BOOT COLOR
931 LC Unibody Pre-Assembled Simplex	153 125µm	3 Green	G 1.2mm	6 Green
932 LC Unibody Pre-Assembled Duplex				
933 LC Unibody Un-Assembled Simplex				
934 LC Unibody Un-Assembled Duplex				

931 - 153 - 3G6 ORDER CODE example

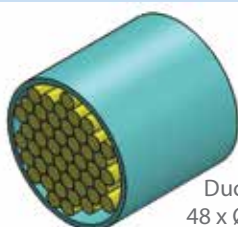
LC-UPC Connector



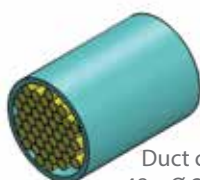
LC-APC Connector

Features:

- Meets the same GR-326 requirements as a conventional 3mm and 2mm cable
- Exceeds 15lb Proof Test Objective as per GR-326-Core section 4.4.3.4
- Passes the GR-326 TWAL Test for Media 1 (ruggedized cable) as per section 4.4.3.5
- Reduces cable congestion without sacrificing mechanical strength



Duct containing 48 x Ø 3mm cable



Duct containing 48 x Ø 2mm cable



Duct containing 48 x Ø 1.2mm cable