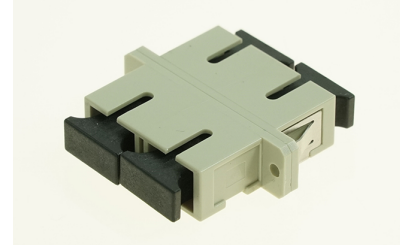
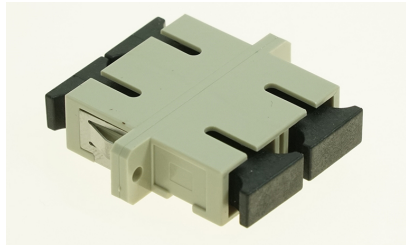
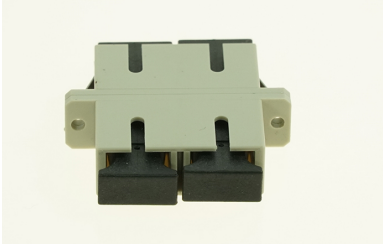


Adapters

Canovate fiber optic adapters are compatible with all fiber types including singlemode (9/125 microns), multimode (50/125 microns) fibers. Canovate components comply with both major industry standards, ANSI/TIA/EIA 568-B.3 and IEC 60874 providing a full range of connectors and adapters, offering a user-friendly solutions in the vertical and horizontal environments.

SC Adapter



Type
SC type FO adapter MM Duplex, Beige