

## PSU-1 (VER. 350 MM) CENTRAL OFFICE CABINET

## FEATURES:

- cabinet depth 350 mm, dedicated for installation in telecommunication central offices with limited space and high number of cables and connectors
- provides 2304 fibre terminations in two hinged module mounting frames (left and right)
- accepts left and right modules MPK-48-L-35, MPK-48-P-35, MPK-72-L-35, MPK-72-P-35
- minimises initial installation expenditures thanks to the modular construction with MPK modules
- easy and convenient devided access to outdoor cable management section and adapter plate, key locked module mounting frames
- high capacity, ease of installation and efficient fibre management
- top and/or bottom outdoor cable or multipatchcord brush entries
- key locked double door with perspex window panes
- stable and rigid construction
- ability to install MPPO modules in the LGX system using PPO-48, PPO-72 frames

## THE SET INCLUDES:

- one or two module mounting frames
- front door
- splittable protective tube
- cable band
- installation and handling instructions
- installation kit
- fibre manifolds R-01C

## ADDITIONAL EQUIPMENT:

- modules MPK-48-L, MPK-48-P
- modules MPK-72-L, MPK-72-P
- patchcord excess length storage module MZK-L-35
- patchcord excess length storage module MZK-P-35
- blank plate PSU-1-Z to cover unused space in the mounting frame
- PPO-48, PPO-72 frames to install MPPO modules in LGX system

## TECHNICAL SPECIFICATIONS:

	PSU-1 /960/600/350 L or P	PSU-1 /960/900/350 L or P	PSU-1 /1920/1200/350/2.2	PSU-1 /2304/1200/350/2.6
number of lateral cable management sections	1 (left or right)	1 (left or right)	2	2
number of splice trays	40 x KS-24		80 x KS-24	96 x KS-24
maximum number of splices	960		960 x 2 = 1920	2 x 1152 = 2304
module type	MPK-48 or MPK-72			
number of modules	20 x MPK-48 or 12 x MPK-72 + 2 x MPK-48	20 x MPK-48 or 12 x MPK-72 + 2 x MPK-48	40 x MPK-48 or 24 x MPK-72 + 4 x MPK-48	48 x MPK-48 or 32 x MPK-72
connector standard	E-2000, SC			
adapter capacity	960 (48 or 72 per module)		1920 (48 or 72 per module)	2304 (48 or 72 per module)
number of outdoor cable entries	26		52	
maximum diameter of input cable [mm]	50			
dimensions: width/height/depth [mm]	600/2200/350	900/2200/350	1200/2200/350	1200/2600/350
recommended pigtail length [m], 0.9 mm buffered fibre	1,5			
weight [kg]	90	115	145	170
housing material/colour	steel sheet/RAL 7035			

## ORDERING:

PSU-1/1920/1200/350 - cabinet with two hinged module mounting frames, 1920 fibre termination capacity, width 1200 mm, depth 350 mm

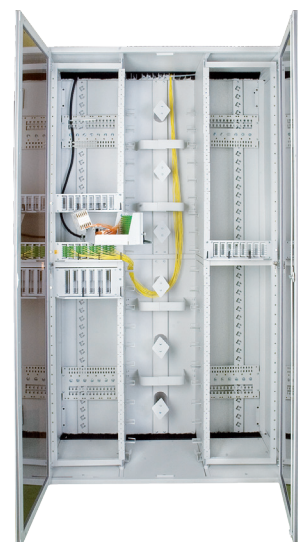
PSU-1/960/600/350L - cabinet with single hinged module mounting frame located on the left side of the cabinet, 960 fibre termination capacity, width 600 mm, depth 350 mm



PSU-1/960/600/350/L



PSU-1/960/900/350/P



PSU-1/1920/1200/350/2.2