

## **OTB96FO Outdoor Termination Box up to 96 Splices**



The Outdoor Termination Box is a box for application in any type of optical network, being specifically designed for application in FTTH networks, offering mechanical protection for the fiber storage system for fusion splices, mechanical splices and even integration of passive components.

With the capacity to accommodate up to 96 splices via 4 units of 24FO splices, it can be installed on a pole or facade, making the connection between the secondary network and the client network, also allowing the connection of up to 24 subscribers.

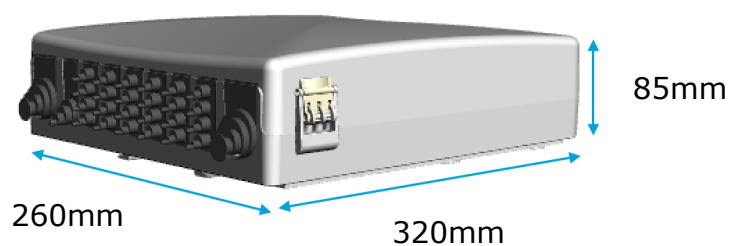
## General Specifications

Model	Specifications
Ports for main cables	2 x Ø25 mm
Ports for distribution cables	1 x Ø16 mm
Ports for drop cables	24
Max. number of splice trays	4 96FO
Splice tray capacity	24 FO
Installation	Wall or façade

## Technical Specifications

Material	ASA
Temperature Range	-40°C to +70° C
Sealing material of cable ports	TPM Rubber
Total weight	1,2 Kg
Volume	7072 cm <sup>3</sup>
Finishing	RAL 7016 with smooth texture
Protection against mechanical impacts	IK07
Protection against solid objects and liquids	IP54

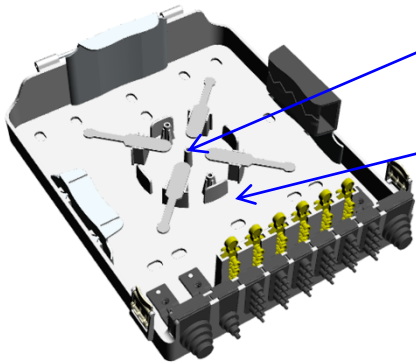
## Dimensions



## Details – 3D Images

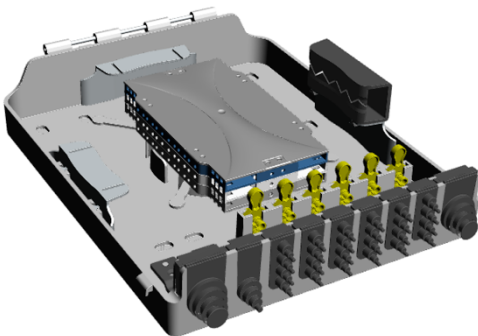


Main, distribution and drop cable ports

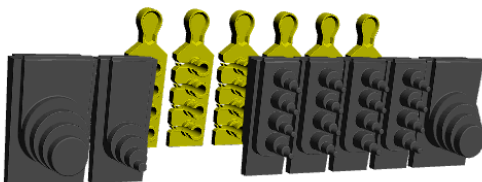


Internal Space – fibre reserve accommodation

External Space – fibre tubes slack

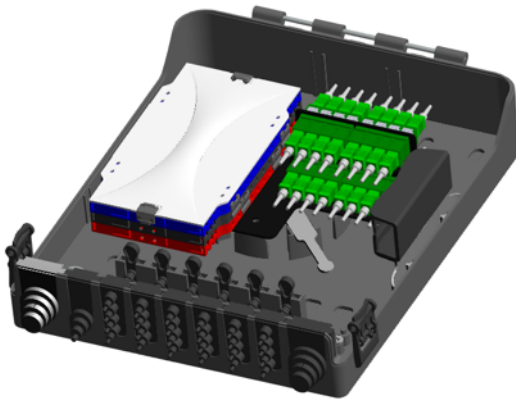


Internal view with 3 FO splice trays



Cable Port details

## Connectorized Version:

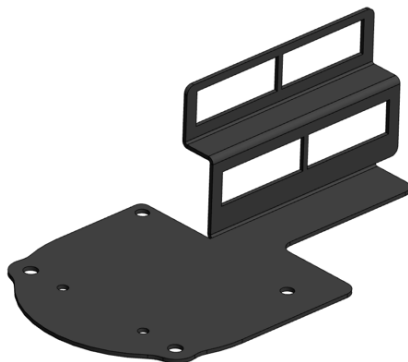


### Model of OTB with trays and metal plate for adaptors:

- White Tray Cover.
- Each splice tray can take up to 24 fusion splices.
- It can be installed up to 4 splice trays.
- Metal plate for 16 SC adaptors
- No adaptors or pigtails are included. The image is just indicative.



### Label for adaptor identification



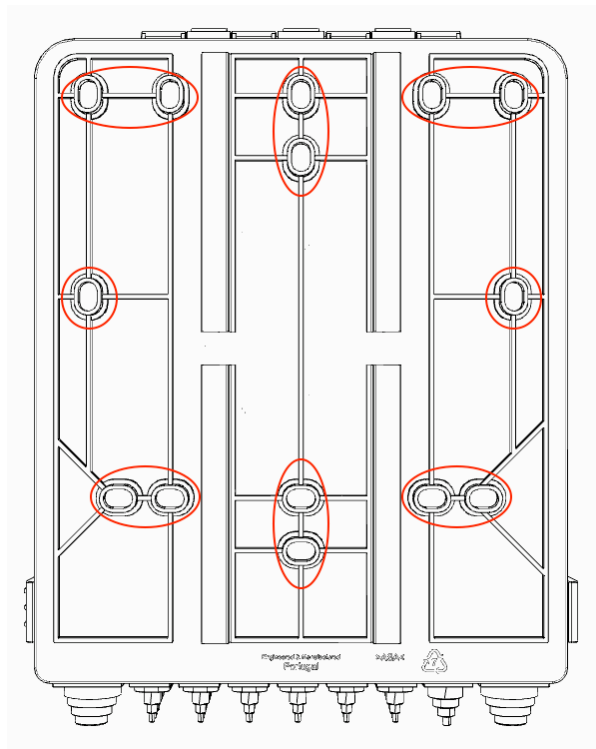
### Metal plate for supporting up to 16 adaptors

### **Wall fixing points**

The rear of the Termination Box is prepared with several holes locations for a Wall fixing points.

Is recommended the use of screws and bushing 4x6mm in opposite sides.

If needed is possible to supply as additional accessory.



### **Included Accessories**

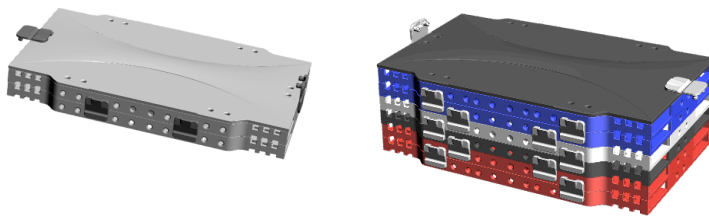
- Base with cover
- 3 Metallic fixings for main/distribution cables including metal clamps
- 2 Rubber ports for main cables up to Ø25 mm
- 1 Rubber port for distribution cables up to Ø16 mm
- 6 Rubber ports for drop cables up to Ø7 mm
- Set of internal accessories for fibre optics organization
- Side lock system
- Cardboard box



## Additional Accessories

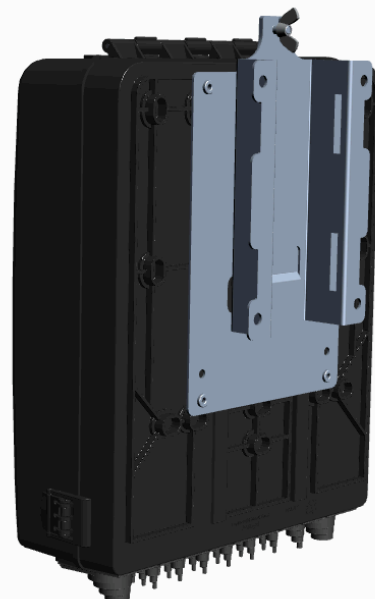
### Fusion Splice Trays

- High resistance ABS plastic;
- White or other color tray with a maximum capacity of 24 optical splices;
- Black tray specially designed for the accommodation of PLC splitters and 12 FO splices;
- Fully stackable solution through easy-opening hinges;
- Modern design cover with label possibility for identification;



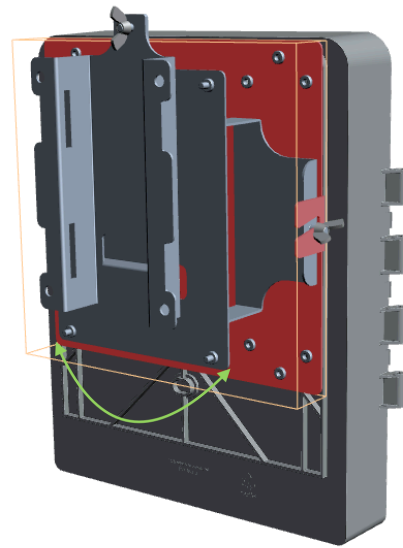
### Fixed Stainless Steel support for pole installation

- Support constructed to be installed on either wooden or concrete poles.
- Possibility of installation on wall
- Strong structure in stainless steel
- Weight: 0.6 Kg
- Includes 4 units of M4 stainless steel screws
- Does not include stainless steel clamp



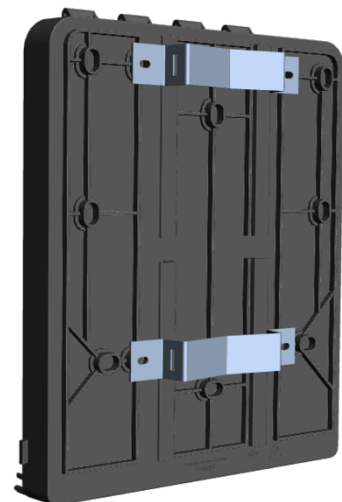
## **Swinging Stainless Steel support for pole installation:**

- Support constructed to be installed on either wooden or concrete poles.
- Possibility of installation on wall.
- Allows frame rotation to 90 °
- Possibility to rotate left or right.
- Strong structure in stainless steel.
- Weight: 1.43 kg



## **Economic Fixed Stainless Steel support for pole installation**

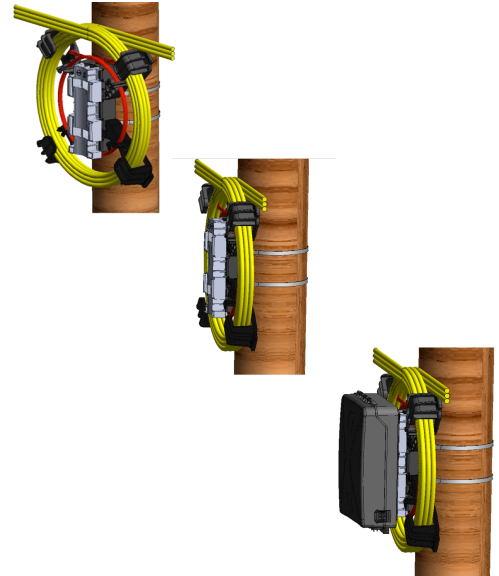
- Support constructed to be installed on either wooden or concrete poles.
- Possibility of installation on wall.
- Strong structure in stainless steel.
- Weight: 0.1 Kg
- Includes 4 units of M4 stainless steel screws
- Include stainless steel clamp Ø 216mm



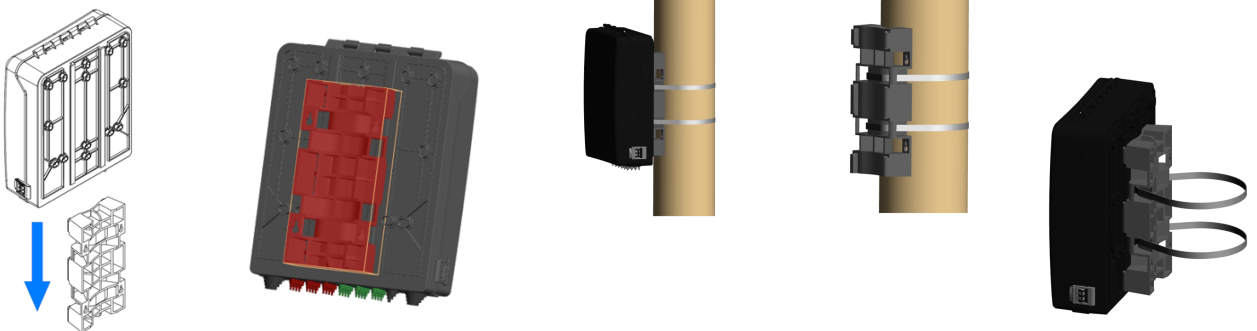
## **Sliding System: Extender Directly to Cable Slack Holder**

- Sliding mechanism from the rear side from the OTB;
- No special tools or screws are required;
- The Splice Closure IP stays intact (IP54);
- Pole installation through 2 stainless steel band;
- Very light weight 0,235kg;
- Produced in ASA material

Does not include stainless steel band

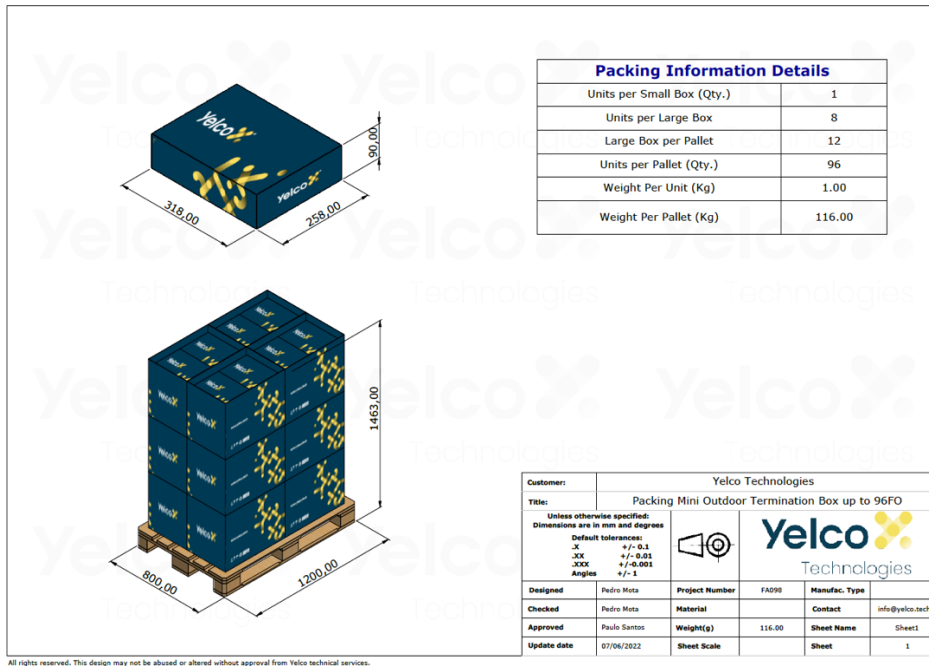


## **Sliding System: Pole & Wall Bracket**





## Packing Details



## Part Number

## Description

1010030000123	Outdoor Termination Box 96FO <u>black color RAL7016</u>
1010030000125	Outdoor Termination Box 96FO (with slide pole bracket) <u>black color RAL7016</u>
1010030000127	Outdoor Termination Box 96FO (with Cable Slack Holder Extender) <u>black color RAL7016</u>
1010030000124	Outdoor Termination Box 96FO <u>grey color RAL7035</u>
1010030000126	Outdoor Termination Box 96FO (with slide pole bracket) <u>grey color RAL7035</u>
1010030000128	Outdoor Termination Box 96FO (with Cable Slack Holder Extender) <u>grey color RAL7035</u>



End of Technical Data Sheet

VII