

## BRANCH BOXES

## FEATURES:

- intended for branching from vertical cable in multi-dwelling buildings
- mounted on previously installed vertical cable
- available in versions for performing splices or as protective cover of branching
- possibility of mounting in places of limited space - small dimensions

## EQUIPMENT:

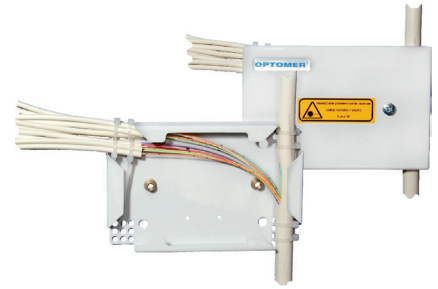
- cable ties and brackets
- installation and handling instruction
- installation kit

## TECHNICAL SPECIFICATIONS:

	OKLD	OKLDS	RKLD-2	RKLD-6	RKLD-12
number of splices	-	12	-	-	12
number of splice trays			-		1
number of input/output vertical cables	1/1				
maximum number of client's cables or microtubes	12xØ5 mm	12xØ5 mm	2xØ5 mm	6xØ5 mm	12xØ5 mm
maximum diameter of cable/duct entering a splice/branch box [mm]	13,5				
dimensions: width/height/depth [mm]	147/97/27	147/97/27	116/25/22	36,5/140/27	64/215/40
weight [kg]	0,2	0,2	0,016	0,033	0,066
colour	RAL 7035		RAL 9010		
housing material	powder coated steel sheet		ABS		
mechanical IK protection	IK10		IK08		
environmental IP protection	IP20	IP30	IP40	IP41	

## ORDERING:

Be-Box 12 - Easy Access Cable Branch Splice Box, capacity up to 12 splices, material - plastic



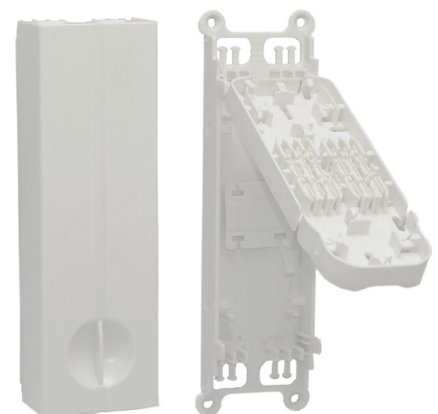
*Branch Box OKLD*



*Branch Box OKLDS*



*Branch Box By-Box 6*



*Branch Box Be-Box 12*